

# ***KJC*** ROTARY JOINTS

*Swivel Joints/Accessory & Technical Data*



# Contents

<b>Company History</b>	4
<b>Technological History</b>	5
Selection	6
<b>Rotary Joints</b>	8
Model Identification	9
Application Examples	10
Mounting Examples	11
Series 1000	12
Series 2200	15
Series 3000	19
Series 3200	21
Series 3700	23
Series 4000	26
Series 5000	28
Series 6000	30
Series 7200	41
Journal Flange	42
Syphon Hose	42
Syphon Elbow	43
Syphon Scoop	43
Joint Stand	45
<b>Swivel Joints</b>	46
Model Identification	47
Application Examples	47
Series 100	48
Series 200	49
Series 300	50
Series 400	51
Series 500	52
Series 600	53
Series 610	54
Series 1000	55
Steam Flow Chart	56
Flow-Rate Chart	57
Rotary Joint PV Value	58
Rotary Joint Torque	59
Caution/General	60
Caution/Hydraulic	61
KJC Expand Shaft	62
KJC Press Seat	62
Order Sheet	63



***KJC, Its successful path in the infinite competition,  
is never been stopped.  
Furthermore, we will move forward to be a superior  
enterprise in the 21st century.***

**무한경쟁속에서 성장을 거듭한 광진 -  
이제, 21세기 초 우량기업으로 힘찬 전진을 하겠습니다.**

Today, Rotary Joints and Swivel Joints are popular in many places of Modern industrial process and its demands for the quality are soaring.

KJC, as the first and best union manufacturer in Korea, has been dedicated It's all effort to provide the most reliable union product to various industries through endless self innovation and technology development.

Now, KJC's mass production facility has the most advanced manufacturing lines and cutting-edge technology development and testing equipment Through these we are providing proven quality products & services to global customers.

KJC, as a leading union solution provider, we promise to valued customers the impression beyond the satisfaction.

오늘날 다양한 산업현장에서 고도로 발전된 생산공정과 더불어  
로타리조인트와 스윙벨조인트들이 널리 사용되고 있으며  
이러한 제품들은 점점 더 높은 신뢰성과 품질을 요구 받고 있습니다.

광진은 창업 이래 한국 최초, 최고의 로타리, 스윙벨 조인트 전문기업으로서  
다양한 산업현장에 신뢰성 있는 고품질 제품을 공급하기 위해 끊임없는  
자기혁신과 기술개발에 혼신을 다해 왔습니다.

이제 광진은 최신 대량생산설비와 첨단 기술 개발, 시험장비 등을 갖추고  
고품질의 제품과 서비스를 고객 여러분께 제공하고 있으며, 앞으로도  
명실상부한 세계일류기업으로서 고객만족을 넘어 고객감동의 실천을 위해  
힘차게 전진하겠습니다.



## The excellent products of KJC used in various Applications.

광진의 첨단기술이 깃든 우수제품들이 산업의 여러분야에서 중추적 역할을 다하고 있습니다.

Rotary Joints & Swivel Joints, that produced by KJC upon its cutting edge technology & several decades experiences, have been recognized as premium product in the various industry fields.

Some of applications that utilize KJC product are as follows.

- Driers, sizing machines, rayon machines and coating machines in the textile industry.
- Calender machines, mixing rollers, banbury mixer and cooling rollers in the rubber & plastic industry.
- Paper machine drivers and corrugator in paper industry.
- Continous casting machines, and cooling rollers in the steel industry.
- Double driers and ball mills in the chemical industry and drum driers in other industries.

광진이 쌓아온 고도의 기술력과 경험을 바탕으로 제작된 ROTARY JONTS와 SWVEL JONTS는 산업현장에서 최상의 제품으로 호평받고 있습니다.

광진의 제품을 사용하고 있는 산업기계로는 섬유산업의 건조기, 싸이징 M/C, 레이온 M/C, 코팅기, 고무 플라스틱, 산업의 카렌다, 믹싱로라, 반바리 믹사, 냉각롤 제지산업의 초지 드라이어 골게이트 M/C, 제철산업의 연속주조설비 입연롤라, 냉각롤, 화학공업의 더블드라이어 볼밀 기타 산업의 드럼건조기 등 여러 분야에서 응용되고 있습니다.

# Company History

September	2011	KJC R&D Division Institute
July	2011	Iran : KEYVAN TEJARAT VALA CO., LTD.
March	2008	China : SHANGHAI XIANGUO CORPORATION.
January	2006	Malaysia : PUSACO INDUSTRIAL SUPPLIES SDN. BHD. The Philippines : BELFER INTERNATIONAL CO.
November	2005	Acquired Quality Management System Certificate(ISO 9001)
October	2005	Changed the company CI
December	2004	Expanded the head office and factory in Busan
August	2002	Moved to a new building of Seoul Office
September	1997	Built a warehouse
January	1996	Changed the company name to Kwangjin Corp.
January	1986	Mass production of rotary joints started
December	1985	Succeeded in developing domestic production of rotary joint
February	1984	Established Seoul Office
February	1983	Established Kwangjin Trade Company



## Partners

	Samsung Electronics		SeAh Besteel		KCC
	LG Electronics		Kumho Tire		IDH
	Hyundai Motor		Hankook Tire		Bongshin
	Kia Motor		Nexen Tire		Asia papertec
	Posco		LS cable		Sehacorp
	Hyundai steel		LG chem		Dongil
	Dongkuk steel		HLCC		Dongbang

## Technological History

July	2010	Swivel Joint DNV FOR Extra-High-Pressure certificated (Certification No. : PUS-10-5853)
June	2010	DNV Swivel Joint manufacturing plant inspection passed
May	2010	DNV Welder and Welding approval (Certification No. : WAP-10-008, WAP-10-009)
February	2010	Swivel Joint DNV FOR BURNER BOOM certificated (Certification No. : PUS-10-4176)
April	2006	Utility Model Registration for KJC Press seat
November	2005	Developed extra high-pressure rotary joint for hydraulic expand shaft (max. pressure: 400kg/cm <sup>2</sup> )
November	2005	Acquired ISO 9001 Certificate
November	2005	Utility Model Registration for hydraulic expand shaft for knife fixation device
May	2002	Developed pipeless rotary joint for continuous casting
March	2001	Developed OJ500-A-300A swivel joint
January	2000	Developed OR2425-200A rotary joint
March	1997	Developed Telescope swivel joint/ Posco Descaling Line (Media/Water, Pressure/ 210/cm <sup>2</sup> )
January	1997	Developed extra high-pressure swivel joint /Posco Descaling Line (Media/Hydro Oil, Pressure/ 350kg/cm <sup>2</sup> )
January	1996	Developed hydraulic rotary joint/ Non Seal Type (Pressure/ 140kg/cm <sup>2</sup> , max. speed/1380rpm)
May	1994	Developed rotary joint for gun drill cutting oil (Pressure/ 140kg/cm <sup>2</sup> , max. speed/12,000rpm)



# Selection Chart For KJC Products

Section	Series No.	Size	Air			Water		
			kg/cm <sup>2</sup> (Psi)	°C (°F)	FPM	kg/cm <sup>2</sup> (Psi)	°C (°F)	FPM
Rotary Joint	#1000	15A-40A (1/2"~1 1/2")	*	*	*	15 (210)	180(360)	300
		50A-80A (2"~3")	*	*	*	15 (210)	180(360)	150
	#2200	6A-25A (1/8"~1")	10 (150)	100 (210)	1000	10 (150)	100 (210)	1000
		32A-40A (1 1/4"~1 1/2")	10 (150)	100 (210)	700	10 (150)	100 (210)	700
		50A-80A (2"~3")	10 (150)	100 (210)	500	10 (150)	100 (210)	500
	#3000	15A-25A (1/2"~1")	*	*	*	*	*	*
		32A-80A (1 1/4"~3")	*	*	*	*	*	*
	#3200	15A-25A (1/2"~1")	*	*	*	*	*	*
		32A-80A (1 1/4"~3")	*	*	*	*	*	*
	#3700	15A-25A (1/2"~1")	*	*	*	*	*	*
		32A-80A (1 1/4"~3")	*	*	*	*	*	*
	#4000	50A-100A (2"~4")	*	*	*	*	*	*
		125A-150A (5"~6")	*	*	*	*	*	*
	#5000	BR5005-10A						
		BR5105-20A						
		BR5205-25A, BR5305-25A						
		BR5405-40A						
	#6000	BR6101-25A, 32A	10 (150)	100 (210)	250	70 (1000)	100 (210)	250
		BR6106-25A, 32A	10 (150)	100 (210)	250	70 (1000)	100 (210)	250
		BR6701-25A, 32A	10 (150)	100 (210)	250	70 (1000)	100 (210)	250
		BR6706-25A, 32A	10 (150)	100 (210)	250	70 (1000)	100 (210)	250
		BR6011-10A, 20A	10 (150)	100 (210)	250	70 (1000)	100 (210)	250
		BR6205-15A	10 (150)	100 (210)	250	70 (1000)	100 (210)	250
		OR6200-15Ax9P-11	10 (150)	100 (210)	250	70 (1000)	100 (210)	250
		ORS6314-M16-03, 36				70 (1000)	80 (180)	12000
		ORS6314-M16-34, 35				105 (1520)	80 (180)	20000
		ORS6414-M16-30, 32				70 (1000)	80 (180)	12000
		ORS6414-M16-29, 34				105 (1520)	80 (180)	15000
		ORS6418-10A-08				50 (734)	175 (350)	3500
		ORS6418-8A-05	10 (150)	80(180)	3500	10 (150)	120 (250)	3500
		BR6414-M16x1.5P				70 (1000)	80 (180)	12000
		BR6505-15A	10 (150)	100 (210)	1000			
	OR6505-10A, 15A, 25A, 20A	10 (150)	100 (210)	1000				
	OR6605-10A, 15A	10 (150)	100 (210)	1000				
#7000	BR7211-20A-25A	10 (150)	100 (210)	100	15 (210)	100 (210)	100	
	BR7201-20A-25A	10 (150)	100 (210)	100	15 (210)	100 (210)	100	
	BR7205-15A	10 (150)	100 (210)	100	15 (210)	100 (210)	100	
Swivel Joint	#100	15A-25A (1/2"~1")	10 (150)	100 (210)	10	10 (150)	100 (210)	10
	#200	15A-40A (1/2"~1 1/2")	10 (150)	100 (210)	10	10 (150)	100 (210)	10
	#300	10A-100A (3/8"~4")	10 (150)	100 (210)		40 (560)	100 (210)	
	#400	10A-100A (3/8"~4")	10 (150)	100 (210)		210 (3000)	100 (210)	
	#500	25A-400A (1"~16")	10 (150)	100 (210)		20 (280)	100 (210)	
	#600	50A-150A (2"~6")	10 (150)	100 (210)		210 (3000)	100 (210)	
	#610	8A-50A (1/4"~2")	10 (150)	100 (210)		210 (3000)	100 (210)	
	#1000	80A-150A (3"~6")				210 (3000)	100 (210)	

Note) ① Avoid max. pressure at max. rpm. operation  
 ② Use Straight Screw(Metric, PF, UNF) or Flange on high speed operation  
 ③ \* Technical Consulting is required

Hydraulic Oil			Steam			Hot Oil			Page
kg/cm <sup>2</sup> (Psi)	°C (°F)	RPM	kg/cm <sup>2</sup> (Psi)	°C (°F)	RPM	kg/cm <sup>2</sup> (Psi)	°C (°F)	RPM	
			15 (210)	180 (360)	300	15 (210)	180 (360)	300	12
			15 (210)	180 (360)	150	15 (210)	180 (360)	150	
			*	*	*	10 (150)	100 (210)	1000	15
			*	*	*	10 (150)	100 (210)	700	
			*	*	*	10 (150)	100 (210)	500	
			15 (210)	220 (420)	300	*	*	*	19
			15 (210)	220 (420)	150	*	*	*	
			*	*	*	15 (210)	220 (420)	300	21
			*	*	*	15 (210)	220 (420)	150	
			15 (210)	220 (420)	300	15 (210)	220 (420)	300	23
			15 (210)	220 (420)	150	15 (210)	220 (420)	150	
			15 (210)	220 (420)	300	15 (210)	220 (420)	300	26
			15 (210)	220 (420)	150	15 (210)	220 (420)	150	
140 (2000)	80 (180)	2000							28
140 (2000)	80 (180)	2000							
140 (2000)	80 (180)	2000							
140 (2000)	80 (180)	2000							
140 (2000)	80 (180)	250							30
140 (2000)	80 (180)	250							
140 (2000)	80 (180)	250							
140 (2000)	80 (180)	250							
140 (2000)	80 (180)	250							
140 (2000)	80 (180)	250							
140 (2000)	80 (180)	250							32
140 (2000)	80 (180)	250							
70 (1000)	80 (180)	12000							33
105(1520)	80 (180)	20000							
70 (1000)	80 (180)	12000							
105 (1520)	80 (180)	15000							
50 (734)	80 (180)	3500	8 (114)	175 (350)	300	8 (114)	175 (350)	300	37
10 (150)	80 (180)	3500				10 (150)	120 (250)	3500	
70 (1000)	80 (180)	12000							
									39
									41
			23 (330)	220 (430)	10	23 (330)	220 (430)	10	48
			23 (330)	220 (430)	10	23 (330)	220 (430)	10	49
40 (560)	80 (180)					*	*		50
210 (3000)	80 (180)					*	*		51
20 (280)	80 (180)					*	*		52
210 (3000)	80 (180)					*	*		53
210 (3000)	80 (180)					*	*		54
210 (3000)	80 (180)					*	*		55

注) ① 최고회전수 조건에서 최고 사용 압력 사용을 피하여 주십시오.  
 ② 고속회전에 사용할 경우는 PT나사를 피하고 평행나사(Metric, FF, UNF)나 Flange로 선택하여 주십시오.  
 ③ \*표시부 사용시 당사와 기술협의 바랍니다.

# Rotary Joints Series

KJC develops and produces various rotary joints for covering the most of media such as, coolant, hot oil, hot water, steam, hydraulics, air, and cutting oils.



ROTARY JOINTS





# KJC Rotary Joints SERIES

## Model Identification / 모델분류

**K R 1 0 0 1** • **40 A** • **20 A**

### GROUPING

- KR Standard
- BR Sub-standard
- OR Special

### SERIES

- 10 Bellows
- 20 Aluminium body
- 22 Brass body
- 23 SUS body
- 24 Steel body
- 30 Spherical surface seal
- 32 Compact style with spherical surface seal
- 37 Spherical surface seal & slide washer
- 40 Dual spherical surface seal
- 50 For Hydraulic oil(Non seal/Drain type)
- 60 For hydraulic oil, air, and cutting oil
- 67 For hydraulic oil(Packing seal/Drain type)
- 72 Body Mounted

### HEAD STYLE

- 0 Duplex, stationary syphon
- 1 Single
- 2 Duplex, rotary syphon
- 3 Thermo Couple(Single)
- 4 Thermo Couple(Duplex,stationary Syphon)
- 5 Thermo Couple(Duplex,rotary Syphon)

### SHAFT SIZE

### INNER PIPE SIZE

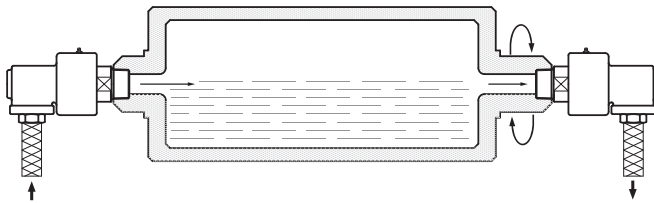
### SHAFT TYPE

- 0 Welding
- 1 PT RH
- 2 PT LH
- 3 Metric RH
- 4 Metric LH
- 5 Flange
- 6 NPT RH
- 7 NPT LH
- 8 PF/UNF RH
- 9 FF/UNF LH



# KJC Rotary Joints SERIES

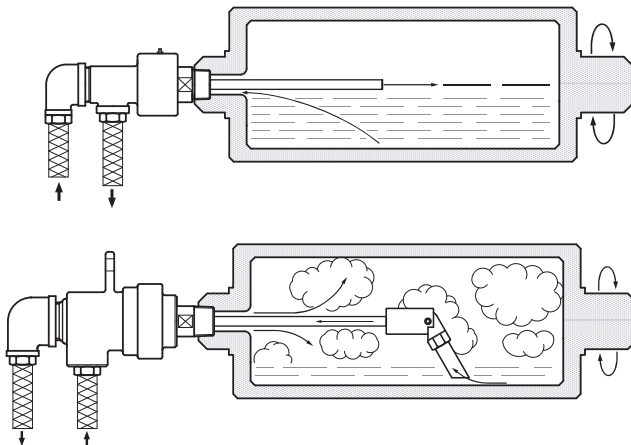
## Application Examples / 사용방법



### ■ Single / 단식

- For Smaller size rotating roll & drum
- Cooling or Heating media in at one end, out at the other end.

비교적 작은 크기의 회전하는 롤과 드럼에 사용되며, 한쪽에서 유체를 공급하고 반대쪽으로 배출하는 방식으로 가열 또는 냉각용으로 사용됩니다.



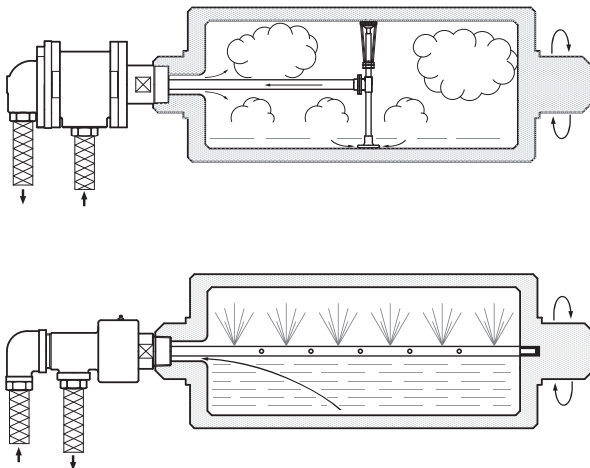
### ■ Duplex, Stationary Syphon / 복식 내관고정식

- Media : Water, Hot Oil
- For Increasing heat exchange rate by fluid supplying through Inner pipe.

내관을 통해 유체를 공급하여 열교환의 효율을 높이기 위해 사용되는 방식으로 주로 물, 열매체용으로 적합하며 각종 기계에 사용됩니다.

- Media : Steam
- For rotating roll & drum
- Media in & out at the same end

주로 스팀용으로 회전하는 롤과 드럼에 사용되며, 한쪽에서 스팀을 공급하여 같은 쪽의 내관을 통해 응축수를 배출하는 방식으로 각종 기계에 사용됩니다.



### ■ Duplex, Rotary Syphon / 복식 내관회전식

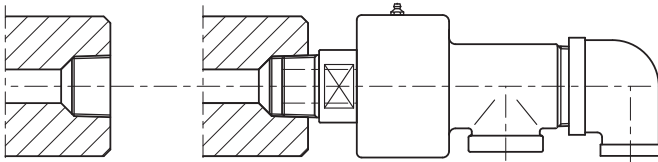
- Media : Steam
- Media in & out at the same end
- Rotary Syphon pipe fixed to the roll and rotate together.

한 쪽으로 스팀을 공급하여 같은쪽의 내관을 통하여 응축수를 배출하며 내관의 끝부분이 롤의 내측면에 부착되어 롤과 함께 회전되는 방식으로 각종 기계에 사용됩니다.

- Media : Water, Hot Oil
- For Increasing heat exchange rate by fluid supplying through rotating Inner pipe.

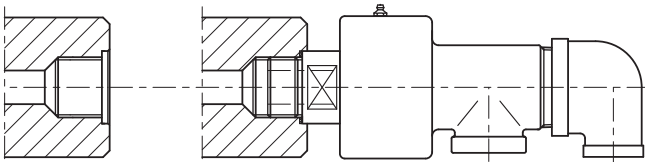
회전하는 내관을 통해 유체를 공급하여 열교환의 효율을 높이기 위하여 사용되는 방식으로 주로 물, 열 매체용으로 적합하며 각종 기계에 사용됩니다.

## Mounting Examples / 설치방법



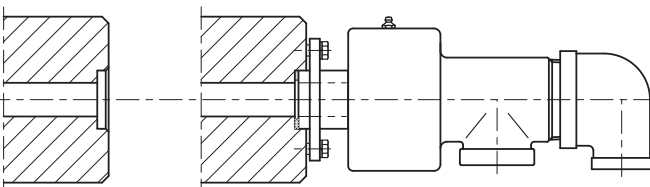
### ■ Taper Screw Type

: General Applications  
PT, NPT



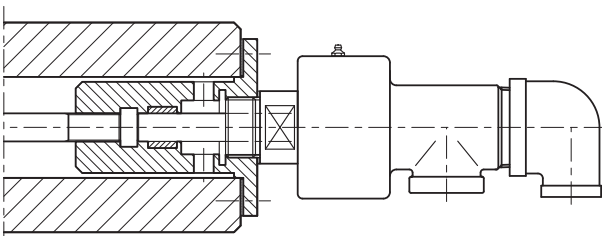
### ■ Straight Screw Type

: High Speed Applications  
Metric, PF, UNF



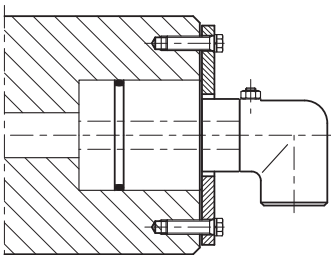
### ■ Flange Type

: High Speed Applications



### ■ Long Syphon Type

: Application with Long Syphon &  
High speed rotations



### ■ Body Mounted Type

# 1000 SERIES KJC ROTARY JOINT

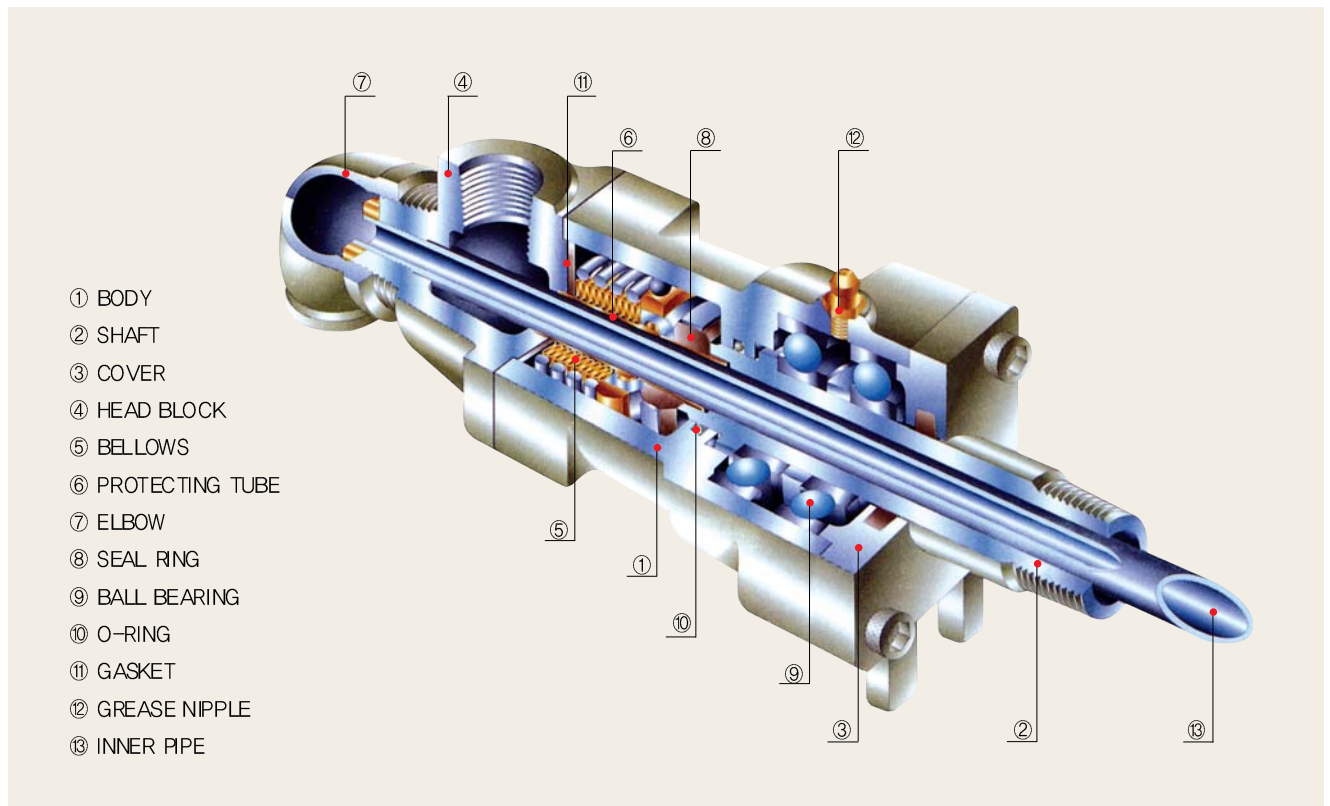


## ■ Operating Condition

Size Range : 15A~80A (1/2"~3")  
 Max. Pressure : 15kg/cm<sup>2</sup> (210PSI)  
 Max. Rotation Speed :  
     15A~40A (1/2"~1 1/2") : 300RPM  
     50A~80A (2"~3") : 150RPM  
 Max. Temperature : 180°C (360°F)  
 Media : Steam, Hot Oil, Water

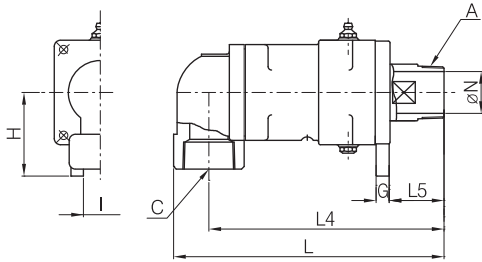
## ■ Features / 특징

- Low Friction
- High speed operation enabled at High temperature & pressure media
- Bellows in side, enables switching between cooling & heating operation
- 회전 저항이 적고 고온고압에서 고속회전이 가능합니다.
- Bellows 사용으로 가열과 냉각의 교대사용이 가능합니다.

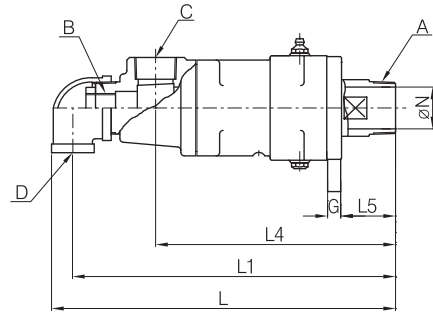


# 1000 SERIES KJC ROTARY JOINT

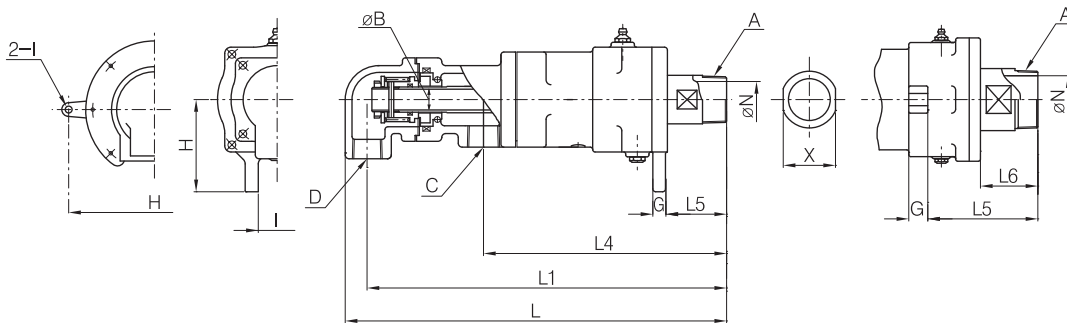
KR1011  
KR1012



KR1001  
KR1002



KR1021  
KR1022



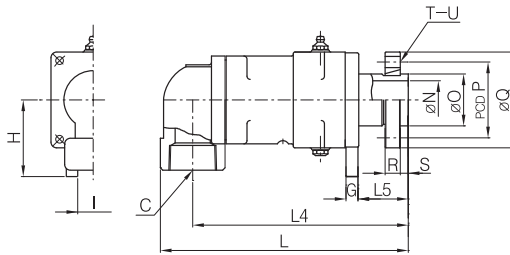
(Unit : mm)

Model No.	A (PT)	B	C	D (PT)	G (PT)	H	I	L	L1	L4	L5	L6	N	X	Wt (kg)
KR1011-15A (KR1012-15A)	1/2" RH (LH)		1/2"		9	55	14	194		179	50		12	21	2.4
KR1001-15A (KR1002-15A)	1/2" RH (LH)	1/8"	1/2"	1/2"	9	55	14	241	227	179	50		12	21	2.6
KR1011-20A (KR1012-20A)	3/4" RH (LH)		3/4"		10	65	20	220		200	50		18	26	3.4
KR1001-20A (KR1002-20A)	3/4" RH (LH)	1/4"	3/4"	3/4"	10	65	20	272	255	195	50		18	26	3.7
KR1011-25A (KR1012-25A)	1" RH (LH)		1"		10	73	20	241		217	59		24	32	5.4
KR1001-25A (KR1002-25A)	1" RH (LH)	3/8"	1"	3/4"	10	73	20	311	294	217	59		24	32	6.1
KR1021-25A (KR1022-25A)	1" RH (LH)	3/8"	1"	3/4"	10	73	20	327	310	220	59		24	32	6.3
KR1011-32A (KR1012-32A)	1 1/4" RH (LH)		1 1/4"		14	95	20	282		249	63		30	46	9.7
KR1001-32A (KR1002-32A)	1 1/4" RH (LH)	1/2"	1"	1"	14	95	20	349	328	250	63		30	46	10.7
KR1021-32A (KR1022-32A)	1 1/4" RH (LH)	1/2"	1"	1"	14	95	20	392	368	250	63		30	46	12
KR1011-40A (KR1012-40A)	1 1/2" RH (LH)		1 1/2"		14	95	20	282		249	63		34	46	9.7
KR1001-40A (KR1002-40A)	1 1/2" RH (LH)	3/4"	1"	1"	14	95	20	349	328	250	63		34	46	10.7
KR1021-40A (KR1022-40A)	1 1/2" RH (LH)	3/4"	1"	1"	14	95	20	392	368	250	63		34	46	12
KR1011-50A (KR1012-50A)	2" RH (LH)		2"		14	100	20	322		280	63		48	60	12
KR1001-50A (KR1002-50A)	2" RH (LH)	1"	1 1/2"	1"	14	100	20	389	368	272	63		48	60	13.1
KR1021-50A (KR1022-50A)	2" RH (LH)	1"	1 1/2"	1"	14	100	20	412	389	269	63		48	60	14.8
KR1011-65A (KR1012-65A)	2 1/2" RH (LH)		2 1/2"		18	120	25	366		317	66		60	75	22
KR1001-65A (KR1002-65A)	2 1/2" RH (LH)	1 1/4"	2"	1 1/2"	18	120	25	437	408	302	66		60	75	23
KR1021-65A (KR1022-65A)	2 1/2" RH (LH)	1 1/2"	1 1/2"	1 1/2"	18	120	25	465	432	302	66		60	75	26.3
KR1011-80A (KR1012-80A)	3" RH (LH)		3"		25	230	ø18	394		339	163	84	73	89	25
KR1001-80A (KR1002-80A)	3" RH (LH)	2"	2"	2"	25	230	ø18	515	475	340	163	84	73	89	27
KR1021-80A (KR1022-80A)	3" RH (LH)	2"	2"	1 1/2"-2"	25	230	ø18	519	488	337	163	84	73	89	28.8

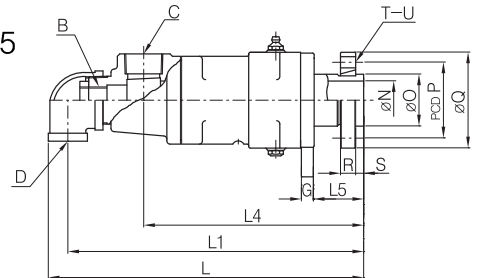


# 1000 SERIES KJC ROTARY JOINT

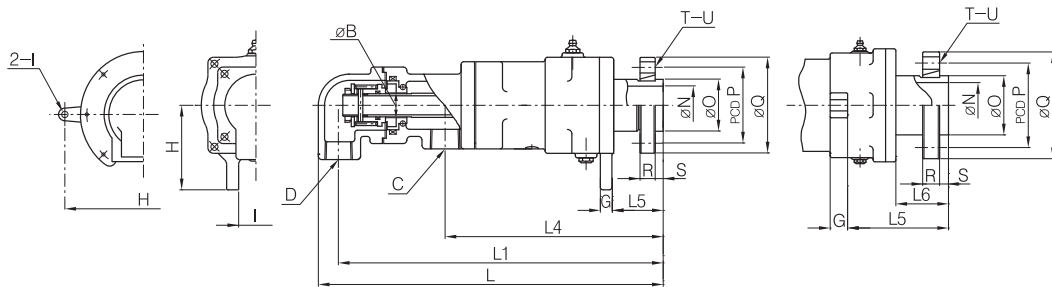
KR1015



KR1005



KR1025



(Unit : mm)

Model No.	B (Ø)	C (P1)	D (P1)	G (mm)	H	I	L	L1	L4	L5	L6	N	O	P	Q	R	S	T	U	Wt (kg)
KR1015-15A		1/2"		9	55	14	184		169	40		12	25	45	62	11	8	4	Ø9	2.6
KR1005-15A	1/8"	1/2"	1/2"	9	55	14	231	217	169	40		12	25	45	62	11	8	4	Ø9	2.8
KR1015-20A		3/4"		10	65	20	214		194	44		18	30	54	74	13	8	4	Ø11	3.8
KR1005-20A	1/4"	3/4"	3/4"	10	65	20	264	249	239	44		18	30	54	74	13	8	4	Ø11	4.1
KR1015-25A		1"		10	73	20	233		209	51		24	35	60	80	14	9	4	Ø11	5.8
KR1005-25A	3/8"	1"	3/4"	10	73	20	303	286	209	51		24	35	60	80	14	9	4	Ø11	6.4
KR1025-25A	3/8"	1"	3/4"	10	73	20	321	304	214	51		24	35	60	80	14	9	4	Ø11	6.7
KR1015-40A		1 1/2"		14	95	20	272		239	63		34	50	75	96	16	9	4	Ø11	10.0
KR1005-40A	3/4"	1"	1"	14	95	20	346	327	249	63		34	50	75	96	16	9	4	Ø11	10.0
KR1025-40A	3/4"	1"	1"	14	95	20	391	368	250	63		34	50	75	96	16	9	4	Ø11	11.3
KR1015-50A		2"		14	100	20	306		266	63		48	65	95	120	19	10	4	Ø14	14.0
KR1005-50A	1"	1 1/2"	1"	14	100	20	387	366	270	63		48	65	95	120	19	10	4	Ø14	14.5
KR1025-50A	1"	1 1/2"	1"	14	100	20	410	387	267	63		48	65	95	120	19	10	4	Ø14	16.2
KR1015-65A		2 1/2"		18	120	25	366		317	66		60	80	110	136	20	12	4	Ø14	24.0
KR1005-65A	1 1/4"	2"	1 1/2"	18	120	25	437	408	302	66		60	80	110	136	20	12	4	Ø14	24.5
KR1025-65A	1 1/2"	1 1/2"	1 1/2"	18	120	25	460	432	302	66		60	80	110	136	20	12	4	Ø14	28.3
KR1015-80A		3"		25	230	Ø18	394		340	163	84	73	90	125	154	20	12	6	Ø14	27.7
KR1005-80A	2"	2"	2"	25	230	Ø18	515	475	340	163	84	73	90	125	154	20	12	6	Ø14	29.7
KR1025-80A	2"	2"	2"	25	230	Ø18	519	488	337	163	84	73	90	125	154	20	12	6	Ø14	31.5



# 2200 SERIES KJC ROTARY JOINT

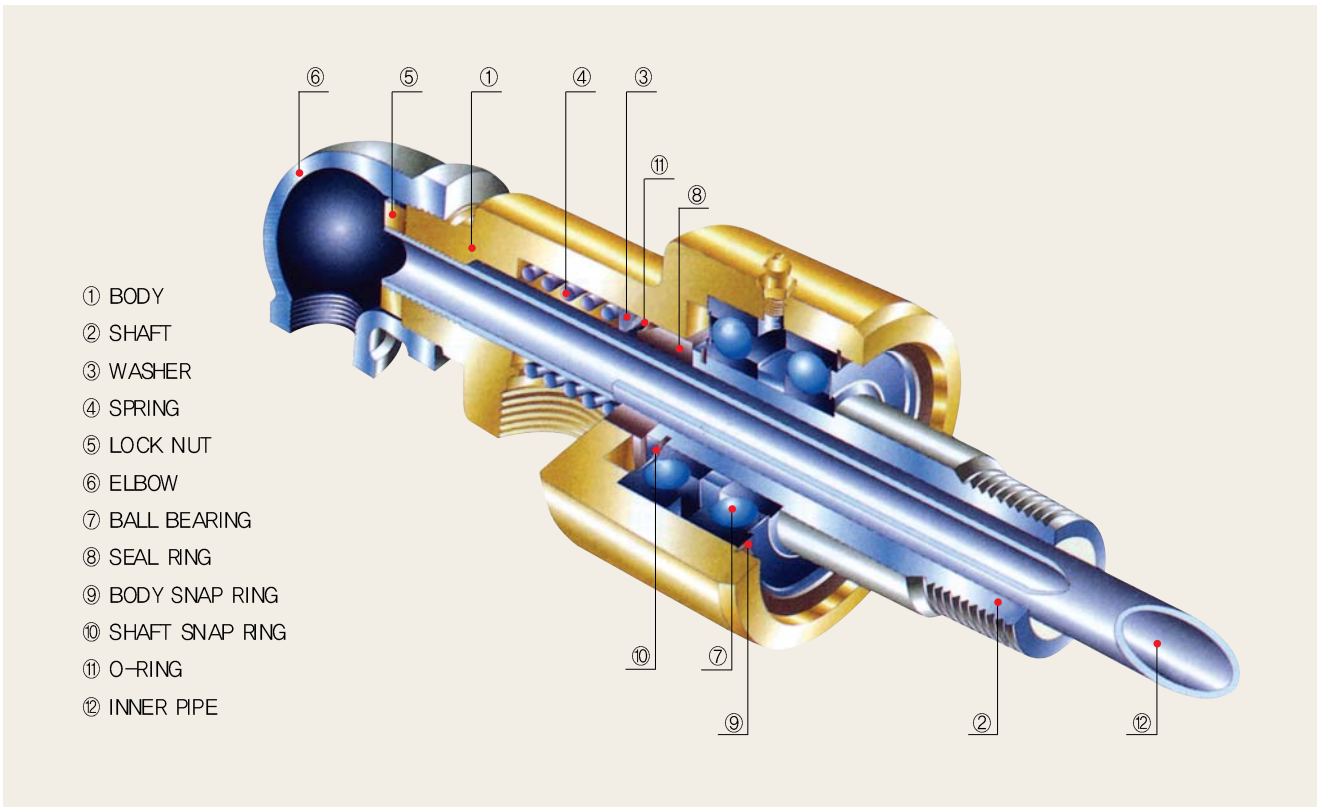


## ■ Operating Condition

Size Range :  
 6A~80A (1/8"~3")  
 Max. Pressure : 10kg/cm<sup>2</sup> (150PSI)  
 Max. Rotation Speed :  
 6A~25A (1/8"~1/4") : 1000RPM  
 32A~40A (1/4"~1/2") : 700RPM  
 50A~80A (2"~3") : 500RPM  
 Max. Temperature : 100°C (210°F)  
 Media : Water, Air, Gas, Oil

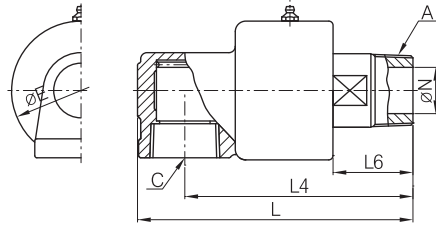
## ■ Features / 특징

- Balanced Seal Type
  - Enables High speed rotation at High pressure
  - Low friction
- Stainless steel shaft and springs.
- Silicon-Carbide Sealing for KRS model
  - Extended running hours than KR model
  - Protection against media contamination by rust, scale, chips & other harmful abrasives.
- Balance Seal Type으로 높은 압력하에서 회전저항이 낮고 고속회전이 가능합니다.
- 스테인레스 스틸로 된 Shaft, Spring 등으로 구성되어 내부식성이 탁월합니다.
- KRS 제품은 실리콘카바이드 소재의 Seal로 구성되어 있으며 유체에 불순물이나 녹이 함유되어 있는 경우와 KR 제품보다 2배이상 긴 수명을 필요로 할 경우 KRS 제품을 사용하십시오.

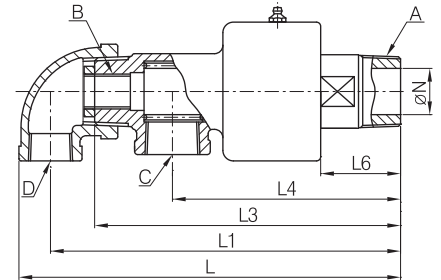


# 2200 SERIES KJC ROTARY JOINT

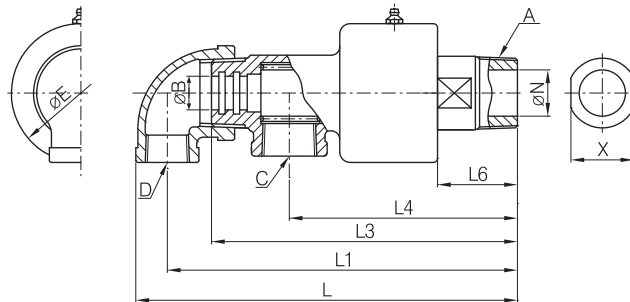
KR2211  
KR2212



KR2201  
KR2202



KR2221  
KR2222

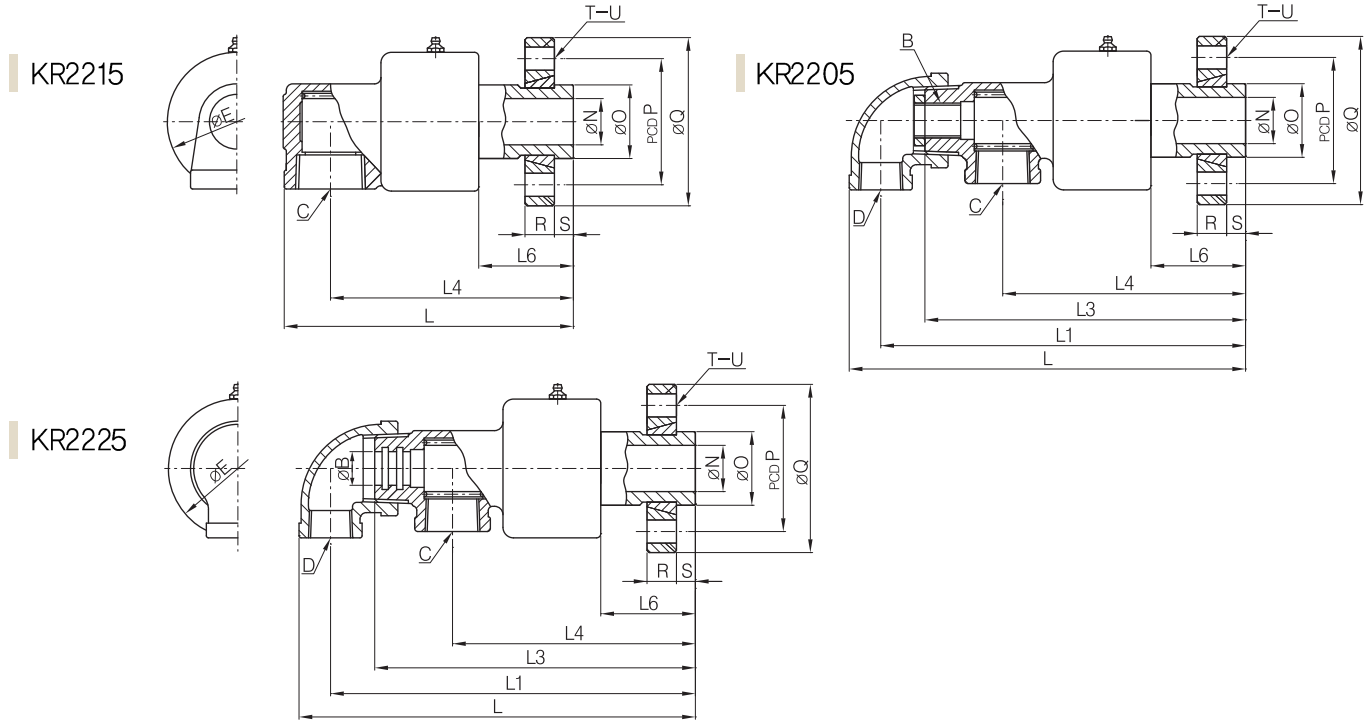


(Unit : mm)

Model No.	A (PT)	B	C (PT)	D (PT)	E	L	L1	L3	L4	L6	N	X	Wt (kg)
KR2211-6A (KR2212-6A)	1/8" RH (LH)		1/4"		40	78			67	23	5	14	0.5
KR2211-8A (KR2212-8A)	1/4" RH (LH)		1/4"		40	78			67	23	5	14	0.5
KR2211-10A (KR2312-10A)	3/8" RH (LH)		3/8"		42	93			76	26	9.5	17	0.4
KR2211-15A (KR2212-15A)	1/2" RH (LH)		1/2"		51	114			96.5	35	13	21	0.65
KR2201-15A (KR2202-15A)	1/2" RH (LH)	PF1/8"	1/2"	1/2"	51	162	147	129	96.5	35	13	21	0.8
KR2221-15A (KR2222-15A)	1/2" RH (LH)	Ø9	1/2"	1/2"	51	162	147	129	96.5	35	13	21	0.8
KR2211-20A (KR2212-20A)	3/4" RH (LH)		3/4"		56	122			101.5	38	17	26	0.83
KR2201-20A (KR2202-20A)	3/4" RH (LH)	PF1/4"	1/2"	1/2"	56	168	153	134	101.5	38	17	26	1
KR2221-20A (KR2222-20A)	3/4" RH (LH)	Ø9, Ø13	1/2"	1/2"	56	168	153	134	101.5	38	17	26	1
KR2211-25A (KR2212-25A)	1" RH (LH)		1"		66	131			108.5	38	22	30	1.2
KR2201-25A (KR2202-25A)	1" RH (LH)	PF3/8"	3/4"	1/2"	66	182	166.5	145.5	108.5	38	22	30	1.5
KR2221-25A (KR2222-25A)	1" RH (LH)	Ø13, Ø16	3/4"	1/2"	66	182	166.5	145.5	108.5	38	22	30	1.5
KR2211-32A (KR2212-32A)	1 1/4" RH (LH)		1 1/2"		88	173			138	46	30	46	2.7
KR2201-32A (KR2202-32A)	1 1/4" RH (LH)	PF1/2"	1"	3/4"	88	234	215	192	138	46	30	46	3.1
KR2221-32A (KR2222-32A)	1 1/4" RH (LH)	Ø20	1"	3/4"	88	234	215	192	138	46	30	46	3.1
KR2211-40A (KR2212-40A)	1 1/2" RH (LH)		1 1/2"		88	173			138	46	35	46	2.6
KR2201-40A (KR2202-40A)	1 1/2" RH (LH)	PF3/4"	1"	3/4"	88	234	215	192	138	46	35	46	3.0
KR2221-40A (KR2222-40A)	1 1/2" RH (LH)	Ø20, Ø26	1"	3/4"	88	234	215	192	138	46	35	46	3.0
KR2211-50A (KR2212-50A)	2" RH (LH)		2"		106	206			168	58	48	60	5
KR2201-50A (KR2202-50A)	2" RH (LH)	PF1"	1 1/2"	1"	106	280	256	228	160	58	48	60	5.5
KR2221-50A (KR2222-50A)	2" RH (LH)	Ø26, Ø32	1 1/2"	1"	106	280	256	228	160	58	48	60	5.5
KR2211-65A (KR2212-65A)	2 1/2" RH (LH)		2 1/2"		127	240			191	64	60	75	9
KR2201-65A (KR2202-65A)	2 1/2" RH (LH)	PF1 1/4"	2"	1 1/2"	127	336	306	271	194	64	60	75	10.4
KR2221-65A (KR2222-65A)	2 1/2" RH (LH)	Ø32, Ø40, Ø48	2"	1 1/2"	127	336	306	271	194	64	60	75	10.4
KR2211-80A (KR2212-80A)	3" RH (LH)		3"		145	278			224	75	70	89	14.5
KR2201-80A (KR2202-80A)	3" RH (LH)	PF1 1/2"	2"	1 1/2"	145	337	309	285	212	75	70	89	13
KR2221-80A (KR2222-80A)	3" RH (LH)	Ø48	2"	1 1/2"	145	337	309	285	212	75	70	89	13



# 2200 SERIES KJC ROTARY JOINT

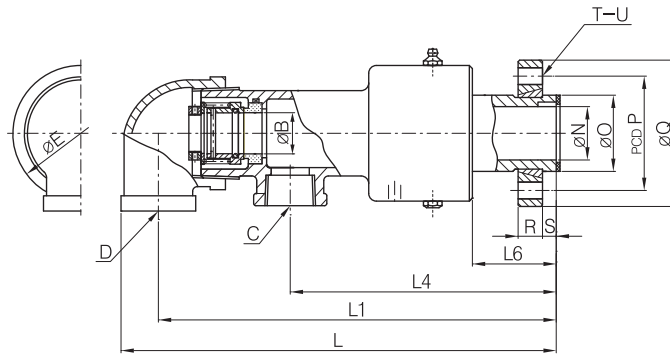


(Unit : mm)

Model No.	B	C (P1)	D (P1)	E	L	L1	L3	L4	L6	N	O	P	Q	R	S	T	U	Wt (kg)
KR2215 - 15A		1/2"		51	114			96.5	35	13	25	45	62	11	8	4	Ø9	0.9
KR2205 - 15A	PF 1/8"	1/2"	1/2"	51	162	147	129	96.5	35	13	25	45	62	11	8	4	Ø9	1.1
KR2225 - 15A	Ø9	1/2"	1/2"	51	162	147	129	96.5	35	13	25	45	62	11	8	4	Ø9	1.1
KR2215 - 20A		3/4"		56	126			105.5	42	17	30	54	74	13	8	4	Ø11	1.2
KR2205 - 20A	PF 1/4"	1/2"	1/2"	56	172	157	138	105.5	42	17	30	54	74	13	8	4	Ø11	1.4
KR2225 - 20A	Ø9, Ø13	1/2"	1/2"	56	172	157	138	105.5	42	17	30	54	74	13	8	4	Ø11	1.4
KR2215 - 25A		1"		66	138			115.5	45	22	35	60	80	14	9	4	Ø11	1.6
KR2205 - 25A	PF 3/8"	3/4"	1/2"	66	189	173.5	152.5	115.5	45	22	35	60	80	14	9	4	Ø11	1.7
KR2225 - 25A	Ø13, Ø16	3/4"	1/2"	66	189	173.5	152.5	115.5	45	22	35	60	80	14	9	4	Ø11	1.7
KR2215 - 40A		1 1/2"		88	182			147	55	35	50	75	96	16	9	4	Ø11	3.2
KR2205 - 40A	PF 3/4"	1"	3/4"	88	243	224	201	147	55	35	50	75	96	16	9	4	Ø11	3.7
KR2225 - 40A	Ø20, Ø26	1"	3/4"	88	243	224	201	147	55	35	50	75	96	16	9	4	Ø11	3.7
KR2215 - 50A		2"		106	206			168	58	48	65	95	120	19	10	4	Ø14	5.8
KR2205 - 50A	PF 1"	1 1/2"	1"	106	280.5	256	228	168	58	48	65	95	120	19	10	4	Ø14	6.5
KR2225 - 50A	Ø26, Ø32	1 1/2"	1"	106	280.5	256	228	168	58	48	65	95	120	19	10	4	Ø14	6.5
KR2215 - 65A		2 1/2"		127	240			191	64	60	80	110	136	20	12	4	Ø14	10.8
KR2205 - 65A	PF 1 1/4"	2"	1 1/2"	127	336	306	271	191	64	60	80	110	136	20	12	4	Ø14	11.7
KR2225 - 65A	Ø32, Ø40, Ø48	2"	1 1/2"	127	336	306	271	194	64	60	80	110	136	20	12	4	Ø14	11.7
KR2215 - 80A		3"		145	268			214	65	70	90	125	154	20	12	6	Ø14	15
KR2205 - 80A	PF 1 1/2"	2"	1 1/2"	145	327	299	275	202	65	70	90	125	154	20	12	6	Ø14	13.6
KR2225 - 80A	Ø48	2"	1 1/2"	145	327	299	275	202	65	70	90	125	154	20	12	6	Ø14	13.6

# 2200 SERIES KJC ROTARY JOINT

BR2225



(Unit : mm)

Model No.	B ( $\varnothing$ )	C (P <sub>T</sub> )	D (P <sub>T</sub> )	E	L	L1	L4	L6	N	O	P	Q	R	S	T	U
BR2225-40A-20A	26	1"	1"	89	285.5	261	174.5	55	35	50	75	96	16	9	4	$\varnothing$ 11
BR2225-50A-25A	33	1 1/4"	1 1/2"	110	332	302	199	58	48	65	95	120	19	10	4	$\varnothing$ 14
BR2225-65A-32A	41	1 1/2"	2"	130	382	343	219	64	60	80	110	136	20	12	4	$\varnothing$ 14



# 3000 SERIES KJC ROTARY JOINT

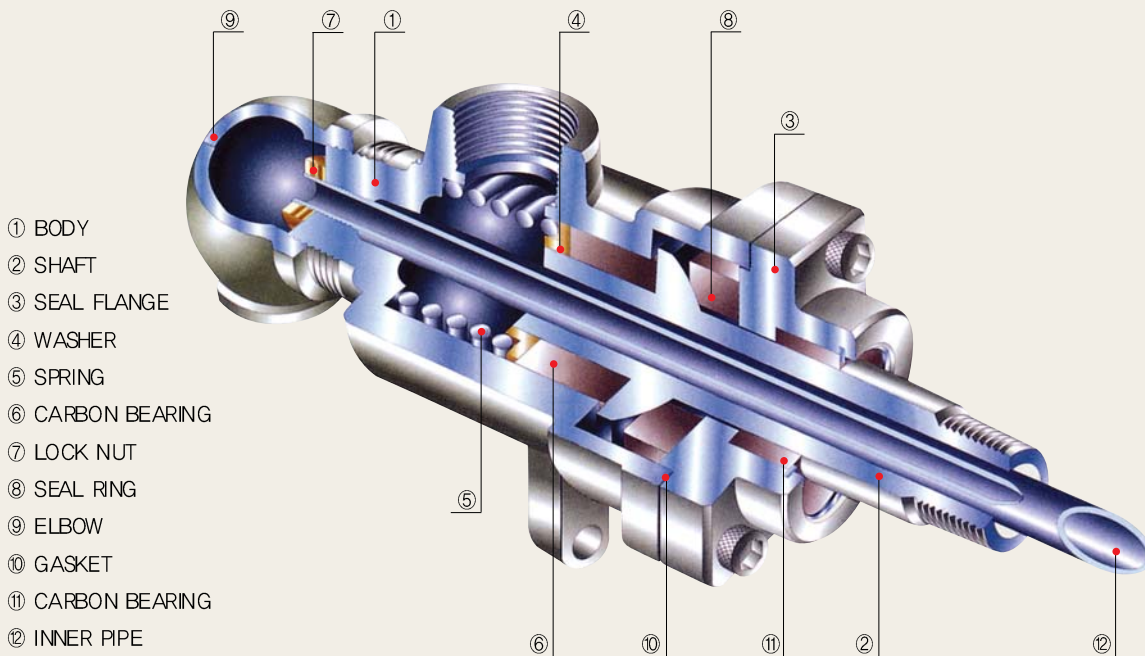


## ■ Operating Condition

Size Range : 15A~80A ( $\frac{1}{2}$ "~3")  
Max. Pressure : 15kg/cm<sup>2</sup> (210PSI)  
Max. Rotation Speed :  
    15A~25A ( $\frac{1}{2}$ "~1") : 300RPM  
    32A~80A ( $1\frac{1}{4}$ "~3") : 150RPM  
Max. Temperature : 220°C (420°F)  
Media : Steam

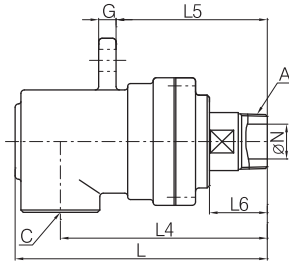
## ■ Features / 특징

- Spherical Sealing
  - Two Widely-Spaced Carbon Bearing
  - Self-supported & Alignment rotating union
  - Easily field repairable
  - For Steam media
  - Non-Lubrication type
- 2개의 Carbon Bearing과 구면 Seal을 사용하여 자체지지형, 자기조심의 구조로 설계되었으며 구조가 간단하여 보수가 용이합니다.
- 무 주유형으로 스팀용에 적합합니다.

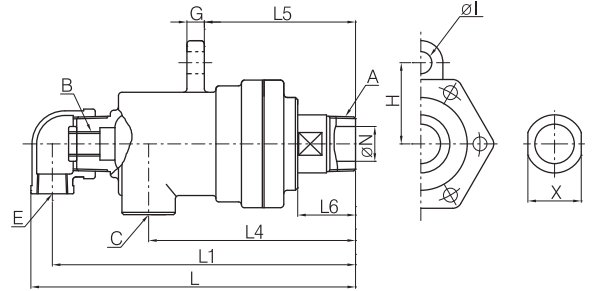


# 3000 SERIES KJC ROTARY JOINT

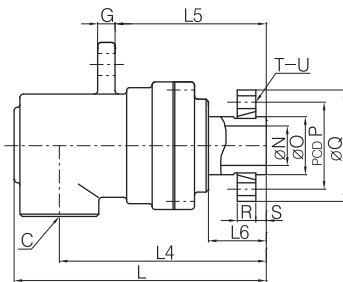
KR3011  
KR3012



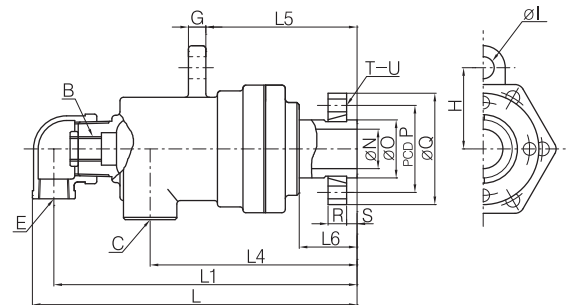
KR3001  
KR3002



KR3015



KR3005



(Unit : mm)

Model No.	A (P1)	B (P2)	C (P1)	E (P1)	G	H	I	L	L1	L4	L5	L6	N	X	O	P	Q	R	S	T	U	Wt (kg)
KR3011-15A (KR3012-15A)	1/2" RH (LH)		1/2"		12	49	Ø15	142		117	89	33	14	21								2
KR3001-15A (KR3002-15A)	1/2" RH (LH)	1/8"	1/2"	1/2"	12	49	Ø15	192	178	117	89	33	14	21								2.2
KR3015-15A			1/2"		12	49	Ø15	142		117	89	40	14		25	45	62	11	8	4	Ø9	2.2
KR3005-15A		1/8"	1/2"	1/2"	12	49	Ø15	192	178	117	89	40	14		25	45	62	11	8	4	Ø9	2.4
KR3011-20A (KR3012-20A)	3/4" RH (LH)		3/4"		9	55	Ø14	160		132	98	38	18	26								2.6
KR3001-20A (KR3002-20A)	3/4" RH (LH)	1/4"	3/4"	3/4"	9	55	Ø14	221	204	132	98	38	18	26								3
KR3015-20A			3/4"		9	55	Ø14	160		132	98	38	18		30	54	74	13	8	4	Ø11	3
KR3005-20A		1/4"	3/4"	3/4"	9	55	Ø14	221	204	132	98	38	18		30	54	74	13	8	4	Ø11	3.4
KR3011-25A (KR3012-25A)	1" RH (LH)		1"		10	65	Ø14	180		144	113	43	23	32								3.6
KR3001-25A (KR3002-25A)	1" RH (LH)	3/8"	1"	3/4"	10	65	Ø14	243	226	144	113	43	23	32								4
KR3015-25A			1"		10	65	Ø14	180		144	113	43	23		35	60	80	14	9	4	Ø11	4
KR3005-25A		3/8"	1"	3/4"	10	65	Ø14	243	226	144	113	43	23		35	60	80	14	9	4	Ø11	4.3
KR3011-32A (KR3012-32A)	1 1/4" RH (LH)		1 1/2"		12	70	Ø19	216		176	129	49	30	46								6.6
KR3001-32A (KR3002-32A)	1 1/4" RH (LH)	1/2"	1"	3/4"	12	70	Ø19	272	253	176	125	49	30	46								6
KR3011-40A (KR3012-40A)	1 1/2" RH (LH)		1 1/2"		12	70	Ø19	216		176	129	49	34	46								6.6
KR3001-40A (KR3002-40A)	1 1/2" RH (LH)	3/4"	1"	3/4"	12	70	Ø19	272	253	176	125	49	34	46								6
KR3015-40A			1 1/2"		12	70	Ø19	216		176	129	49	34		50	75	96	16	9	4	Ø11	7
KR3005-40A		3/4"	1"	3/4"	12	70	Ø19	272	253	176	129	49	34		50	75	96	16	9	4	Ø11	7
KR3011-50A (KR3012-50A)	2" RH (LH)		2"		16	92	Ø23	248		192	156	63	48	60								10.2
KR3001-50A (KR3002-50A)	2" RH (LH)	1"	1 1/2"	1"	16	92	Ø23	324	303	204	156	63	48	60								10.5
KR3015-50A			2"		16	92	Ø23	248		192	156	63	48		65	95	120	19	10	4	Ø11	12
KR3005-50A		1"	1 1/2"	1"	16	92	Ø23	324	303	204	156	63	48		65	95	120	19	10	4	Ø14	12
KR3011-65A (KR3012-65A)	2 1/2" RH (LH)		2 1/2"		18	110	Ø23	267.5		206.5	170.5	64.5	60	75								13.7
KR3001-65A (KR3002-65A)	2 1/2" RH (LH)	1 1/2"	2"	1 1/2"	18	110	Ø23	360.5	332.5	214.5	170.5	64.5	60	75								15.5
KR3015-65A			2 1/2"		18	110	Ø23	263		210	166	60	60		80	110	136	20	12	4	Ø14	15.2
KR3005-65A		1 1/2"	2"	1 1/2"	18	110	Ø23	356	328	210	166	60	60		80	110	136	20	12	4	Ø14	17
KR3011-80A (KR3012-80A)	3" RH (LH)		3"		24	125	Ø25	320.5		262.5	198.5	72.5	70	85								24.5
KR3001-80A (KR3002-80A)	3" RH (LH)	2"	2 1/2"	2"	24	125	Ø25	434.5	394.5	262.5	198.5	72.5	70	85								27
KR3015-80A			3"		24	125	Ø25	318		260	196	70	70		90	125	154	20	12	6	Ø14	27.5
KR3005-80A		2"	2 1/2"	2"	24	125	Ø25	432	392	260	196	70	70		90	125	154	20	12	6	Ø14	30



# 3200 SERIES KJC ROTARY JOINT

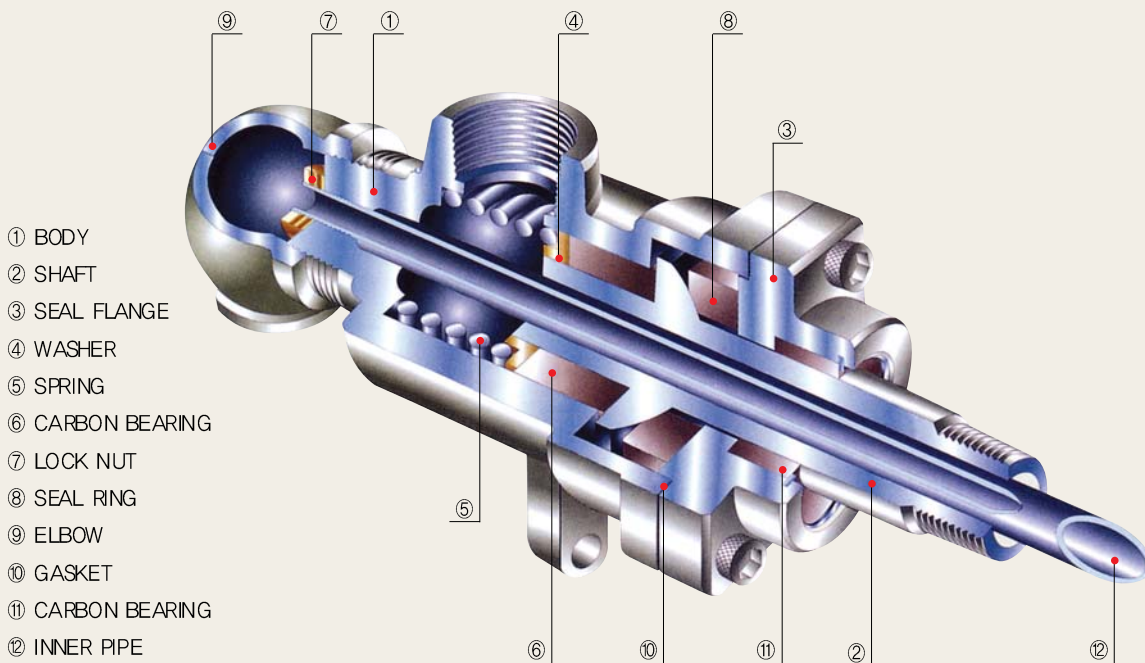


## ■ Operating Condition

- Size Range : 15A~80A ( $\frac{1}{2}$ " ~ 3")
- Max. Pressure : 15kg/cm<sup>2</sup> (210PSI)
- Max. Rotation Speed :
  - 15A~25A ( $\frac{1}{2}$ " ~ 1") : 300RPM
  - 32A~80A (1 $\frac{1}{4}$ " ~ 3") : 150RPM
- Max. Temperature : 220°C (420°F)
- Media : Hot Oil

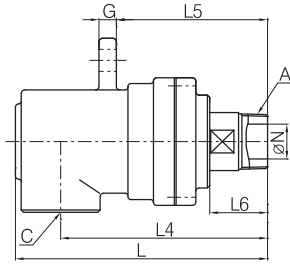
## ■ Features / 특징

- Spherical Sealing
- Two Widely-Spaced Carbon Bearing
- Self-supported & Alignment rotating union
- Easily field repairable
- For Hot Oil media
- Over Max. Temp.(220°C/420°F), consult KJC
- 2개의 Carbon Bearing과 구면Seal을 사용하여 자체지지형, 자기조심의 구조로 설계되었으며 구조가 간단하여 보수가 용이합니다.
- Hot Oil용으로 설계된 제품이며 사용온도에 주의하시고 220°C(420°F) 이상일때는 당사로 문의하시기 바랍니다.

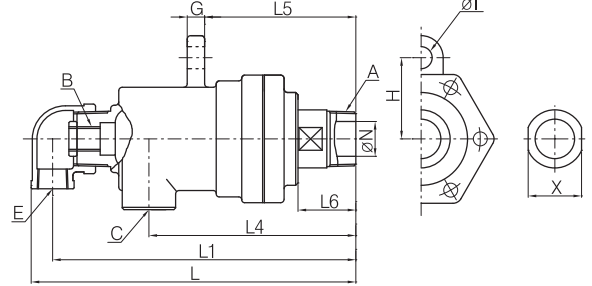


# 3200 SERIES KJC ROTARY JOINT

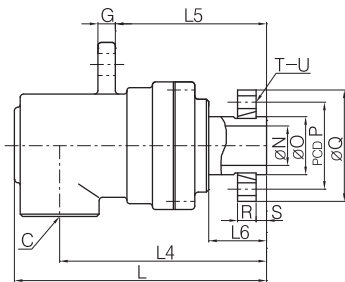
KR3211  
KR3212



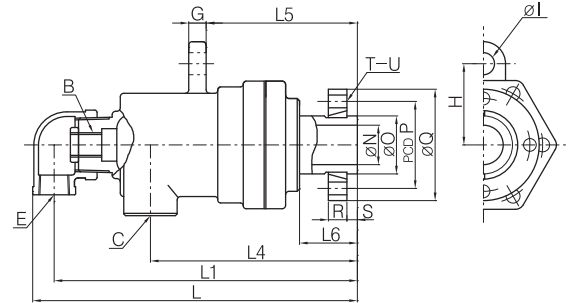
KR3201  
KR3202



KR3215



KR3205



(Unit : mm)

Model No.	A (P1)	B (P2)	C (P3)	E (P4)	G	H	I	L	L1	L4	L5	L6	N	X	O	P	Q	R	S	T	U	Wt (kg)	
KR3211-15A (KR3212-15A)	1/2" RH (LH)		1/2"		12	49	Ø15	142		117	89	33	14	21									2
KR3201-15A (KR3202-15A)	1/2" RH (LH)	1/8"	1/2"	1/2"	12	49	Ø15	192	178	117	89	33	14	21									2.2
KR3215-15A			1/2"		12	49	Ø15	142		117	89	40	14		25	45	62	11	8	4		Ø9	2.2
KR3205-15A		1/8"	1/2"	1/2"	12	49	Ø15	192	178	117	89	40	14		25	45	62	11	8	4		Ø9	2.4
KR3211-20A (KR3212-20A)	3/4" RH (LH)		3/4"		9	55	Ø14	160		132	98	38	18	26									2.6
KR3201-20A (KR3202-20A)	3/4" RH (LH)	1/4"	3/4"	3/4"	9	55	Ø14	221	204	132	98	38	18	26									3
KR3215-20A			3/4"		9	55	Ø14	160		132	98	38	18		30	54	74	13	8	4		Ø11	3
KR3205-20A		1/4"	3/4"	3/4"	9	55	Ø14	221	204	132	98	38	18		30	54	74	13	8	4		Ø11	3.4
KR3211-25A (KR3212-25A)	1" RH (LH)		1"		10	65	Ø14	180		144	113	43	23	32									3.6
KR3201-25A (KR3202-25A)	1" RH (LH)	3/8"	1"	3/4"	10	65	Ø14	243	226	144	113	43	23	32									4
KR3215-25A			1"		10	65	Ø14	180		144	113	43	23		35	60	80	14	9	4		Ø11	4
KR3205-25A		3/8"	1"	3/4"	10	65	Ø14	243	226	144	113	43	23		35	60	80	14	9	4		Ø11	4.3
KR3211-32A (KR3212-32A)	1 1/4" RH (LH)		1 1/2"		12	70	Ø19	216		176	129	49	30	46									6.6
KR3201-32A (KR3202-32A)	1 1/4" RH (LH)	1/2"	1"	3/4"	12	70	Ø19	272	253	176	125	49	30	46									6
KR3211-40A (KR3212-40A)	1 1/2" RH (LH)		1 1/2"		12	70	Ø19	216		176	129	49	34	46									6.6
KR3201-40A (KR3202-40A)	1 1/2" RH (LH)	3/4"	1"	3/4"	12	70	Ø19	272	253	176	125	49	34	46									6
KR3215-40A			1 1/2"		12	70	Ø19	216		176	129	49	34		50	75	96	16	9	4		Ø11	7
KR3205-40A		3/4"	1"	3/4"	12	70	Ø19	272	253	176	129	49	34		50	75	96	16	9	4		Ø11	7
KR3211-50A (KR3212-50A)	2" RH (LH)		2"		16	92	Ø23	248		192	156	63	48	60									10.2
KR3201-50A (KR3202-50A)	2" RH (LH)	1"	1 1/2"	1"	16	92	Ø23	324	303	204	156	63	48	60									10.5
KR3215-50A			2"		16	92	Ø23	248		192	156	63	48		65	95	120	19	10	4		Ø11	12
KR3205-50A		1"	1 1/2"	1"	16	92	Ø23	324	303	204	156	63	48		65	95	120	19	10	4		Ø14	12
KR3211-65A (KR3212-65A)	2 1/2" RH (LH)		2 1/2"		18	110	Ø23	267.5		206.5	170.5	64.5	60	75									13.7
KR3201-65A (KR3202-65A)	2 1/2" RH (LH)	1 1/2"	2"	1 1/2"	18	110	Ø23	360.5	332.5	214.5	170.5	64.5	60	75									15.5
KR3215-65A			2 1/2"		18	110	Ø23	263		210	166	60	60		80	110	136	20	12	4		Ø14	15.2
KR3205-65A		1 1/2"	2"	1 1/2"	18	110	Ø23	356	328	210	166	60	60		80	110	136	20	12	4		Ø14	17
KR3211-80A (KR3212-80A)	3" RH (LH)		3"		24	125	Ø25	320.5		262.5	198.5	72.5	70	85									24.5
KR3201-80A (KR3202-80A)	3" RH (LH)	2"	2 1/2"	2"	24	125	Ø25	434.5	394.5	262.5	198.5	72.5	70	85									27
KR3215-80A			3"		24	125	Ø25	318		260	196	70	70		90	125	154	20	12	6		Ø14	27.5
KR3205-80A		2"	2 1/2"	2"	24	125	Ø25	432	392	260	196	70	70		90	125	154	20	12	6		Ø14	30



# 3700 SERIES KJC ROTARY JOINT

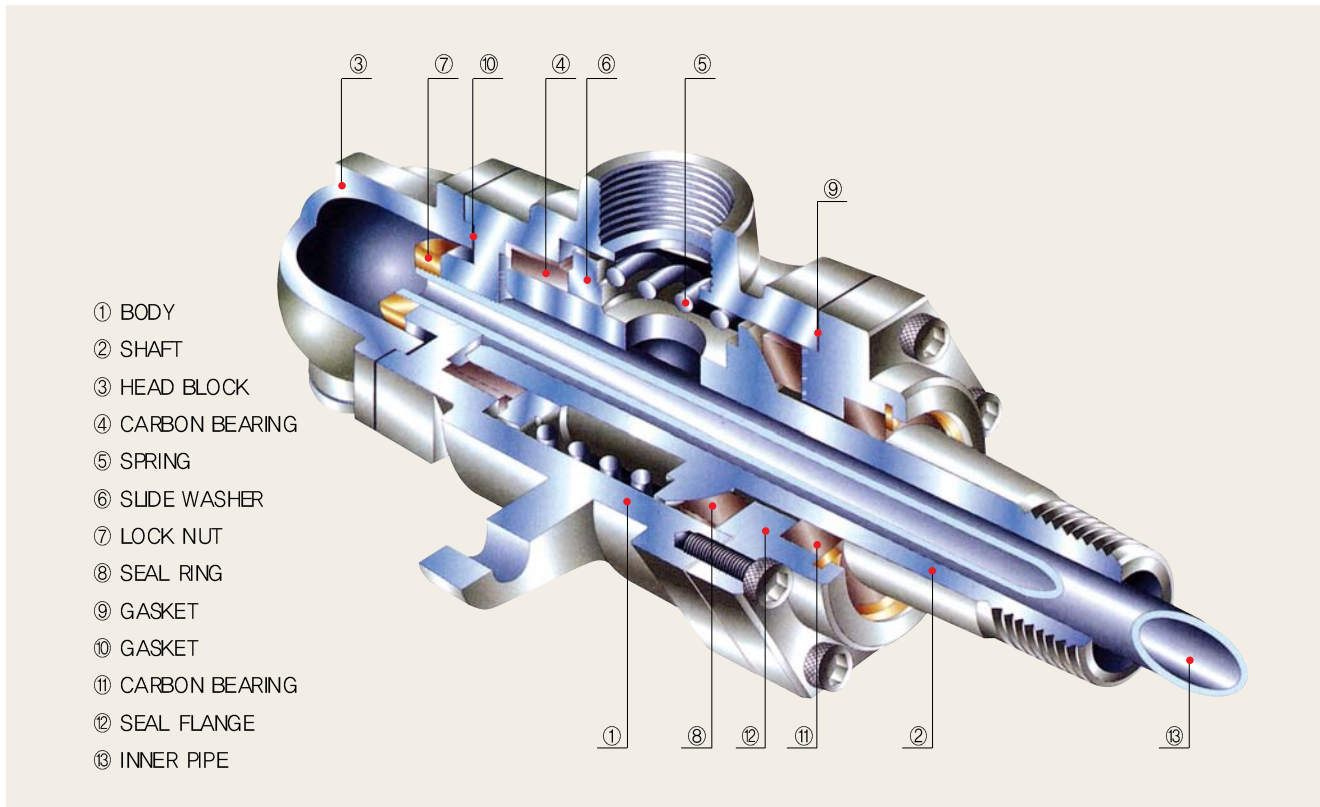


## ■ Operating Condition

Size Range : 15A~80A ( $\frac{1}{2}$ " ~ 3")  
Max. Pressure : 15kg/cm<sup>2</sup> (210PSI)  
Max. Rotation Speed :  
15A~25A ( $\frac{1}{2}$ " ~ 1") : 300RPM  
32A~80A ( $1\frac{1}{4}$ " ~ 3") : 150RPM  
Max. Temperature : 220°C (420°F)  
Media : Steam, Hot Oil

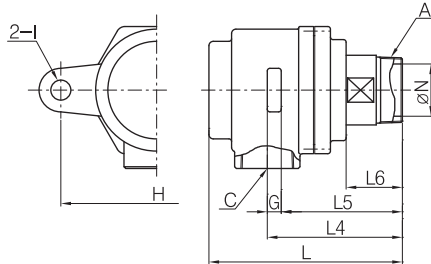
## ■ Features / 특징

- Two Widely-Spaced Carbon Bearing
- Spherical Sealing
- Self-Supported & Alignment rotating union
- Easily field repairable
- Non-Lubrication type
- High Temp. Steam & Hot Oil media
- 넓게 자리잡은 2개의 Carbon Bearing과 구면Seal을 사용하여 자체지지형, 자기조심의 구조로 설계되었으며 구조가 간단하여 보수가 용이합니다.
- 무 주유형으로 고온의 스팀, 열유에 적합합니다.

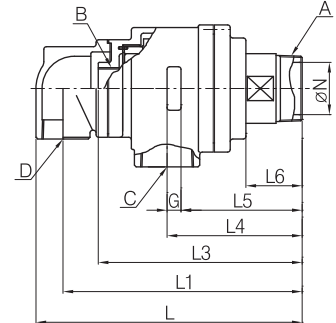


# 3700 SERIES KJC ROTARY JOINT

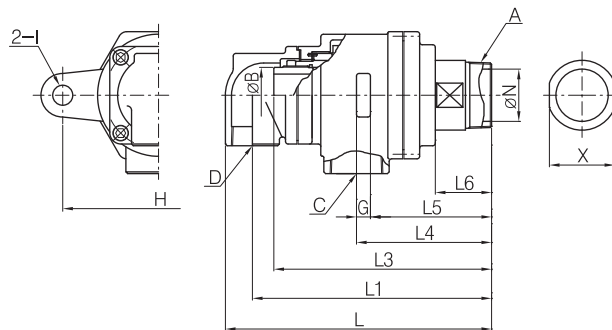
KR3711  
KR3712



KR3701  
KR3702



KR3721  
KR3722



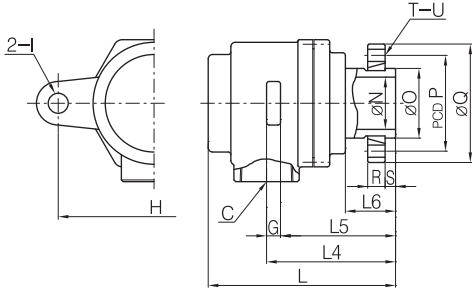
(Unit : mm)

Model No.	A ( $\varnothing$ T)	B	C ( $\varnothing$ T)	D ( $\varnothing$ T)	G	H	I	L	L1	L3	L4	L5	L6	N	X	Wt (kg)
KR3711-15A (KR3712-15A)	1/2" RH (LH)		1/2"		10	110	Ø15	141			96	86	44	14	21	2
KR3701-15A (KR3702-15A)	1/2" RH (LH)	PF1/8"	1/2"	1/2"	10	110	Ø15	184	170	151	96	86	44	14	21	2.1
KR3721-15A (KR3722-15A)	1/2" RH (LH)	Ø11	1/2"	1/2"	10	110	Ø15	184	170	163	96	86	44	14	21	2.1
KR3711-20A (KR3712-20A)	3/4" RH (LH)		3/4"		10	130	Ø15	160			102	92	46	18	26	2.7
KR3701-20A (KR3702-20A)	3/4" RH (LH)	PF1/4"	3/4"	3/4"	10	130	Ø15	195	178	156	102	92	46	18	26	2.8
KR3721-20A (KR3722-20A)	3/4" RH (LH)	Ø14.5	3/4"	3/4"	10	130	Ø15	195	178	170	102	92	46	18	26	2.8
KR3711-25A (KR3712-25A)	1" RH (LH)		1"		12	140	Ø15	170			109	97	48	23	32	3.2
KR3701-25A (KR3702-25A)	1" RH (LH)	PF3/8"	1"	3/4"	12	140	Ø15	208	191	169	109	97	48	23	32	3.5
KR3721-25A (KR3722-25A)	1" RH (LH)	Ø18	1"	3/4"	12	140	Ø15	208	191	183	109	97	48	23	32	3.5
KR3711-32A (KR3712-32A)	1 1/4" RH (LH)		1 1/2"		12	180	Ø19	187			126	114	50	30	46	6.1
KR3701-32A (KR3702-32A)	1 1/4" RH (LH)	PF1/2"	1"	3/4"	12	180	Ø19	248	230	200	126	114	50	30	46	6.9
KR3721-32A (KR3722-32A)	1 1/4" RH (LH)	Ø22.5	1"	3/4"	12	180	Ø19	248	230	206	126	114	50	30	46	6.9
KR3711-40A (KR3712-40A)	1 1/2" RH (LH)		1 1/2"		12	180	Ø19	187			126	114	50	34	46	5.7
KR3701-40A (KR3702-40A)	1 1/2" RH (LH)	PF3/4"	1"	3/4"	12	180	Ø19	248	230	200	126	114	50	34	46	6.5
KR3721-40A (KR3722-40A)	1 1/2" RH (LH)	Ø28	1"	3/4"	12	180	Ø19	248	230	206	126	114	50	34	46	6.5
KR3711-50A (KR3712-50A)	2" RH (LH)		2"		14	200	Ø19	209			149	135	63	48	60	8.2
KR3701-50A (KR3702-50A)	2" RH (LH)	PF1"	1 1/2"	1"	14	200	Ø19	281	259	225	149	135	63	48	60	9.8
KR3721-50A (KR3722-50A)	2" RH (LH)	Ø34.5	1 1/2"	1"	14	200	Ø19	281	259	228	149	135	63	48	60	9.8
KR3711-65A (KR3712-65A)	2 1/2" RH (LH)		2 1/2"		16	220	Ø23	216.5			151.5	135.5	64.5	60	75	11.5
KR3701-65A (KR3702-65A)	2 1/2" RH (LH)	PF1 1/2"	2"	1 1/2"	16	220	Ø23	301.5	271.5	231.5	151.5	135.5	64.5	60	75	13.3
KR3721-65A (KR3722-65A)	2 1/2" RH (LH)	Ø49	2"	1 1/2"	16	220	Ø23	301.5	271.5	250	151.5	135.5	64.5	60	75	13.3
KR3711-80A (KR3712-80A)	3" RH (LH)		3"		16	240	Ø23	260.5			180.5	164.5	72.5	70	85	17.2
KR3701-80A (KR3702-80A)	3" RH (LH)	PF2"	2 1/2"	2"	16	240	Ø23	361.5	325.5	275.5	180.5	164.5	72.5	70	85	19.9
KR3721-80A (KR3722-80A)	3" RH (LH)	Ø61	2 1/2"	2"	16	240	Ø23	361.5	325.5	281.5	180.5	164.5	72.5	70	85	20

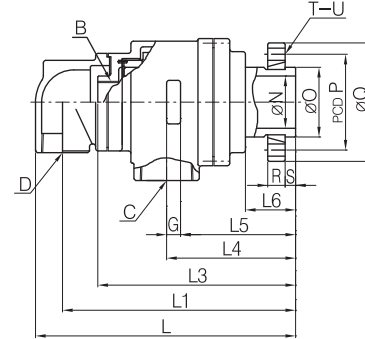


# 3700 SERIES KJC ROTARY JOINT

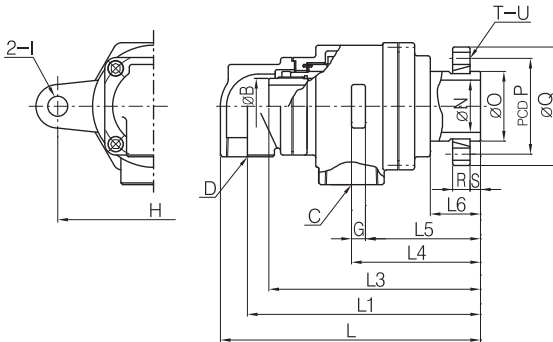
KR3715



KR3705



KR3725



Model No.	B	C (F1)	D (F1)	G	H	I	L	L1	L3	L4	L5	L6	N	O	P	Q	R	S	T	Unit	Wt (kg)
KR3715 - 15A		1/2"		10	110	ø15	141			96	86	44	14	25	45	62	11	8	4	ø9	2.3
KR3705 - 15A	PF 1/8"	1/2"	1/2"	10	110	ø15	184	170	151	96	86	44	14	25	45	62	11	8	4	ø9	2.3
KR3725 - 15A	ø11	1/2"	1/2"	10	110	ø15	184	170	163	96	86	44	14	25	45	62	11	8	4	ø9	2.3
KR3715 - 20A		3/4"		10	130	ø15	160			102	92	46	18	30	54	74	13	8	4	ø11	3.0
KR3705 - 20A	PF 1/4"	3/4"	3/4"	10	130	ø15	195	178	156	102	92	46	18	30	54	74	13	8	4	ø11	3.2
KR3725 - 20A	ø14.5	3/4"	3/4"	10	130	ø15	195	178	170	102	92	46	18	30	54	74	13	8	4	ø11	3.2
KR3715 - 25A		1"		12	140	ø15	170			109	97	48	23	35	60	80	14	9	4	ø11	3.7
KR3705 - 25A	PF 3/8"	1"	3/4"	12	140	ø15	208	191	169	109	97	48	23	35	60	80	14	9	4	ø11	3.9
KR3725 - 25A	ø18	1"	3/4"	12	140	ø15	208	191	183	109	97	48	23	35	60	80	14	9	4	ø11	3.9
KR3715 - 40A		1 1/2"		12	180	ø19	187			126	114	50	34	50	75	96	16	9	4	ø11	6.4
KR3705 - 40A	PF 3/4"	1"	3/4"	12	180	ø19	248	230	200	126	114	50	34	50	75	96	16	9	4	ø11	7.3
KR3725 - 40A	ø28	1"	3/4"	12	180	ø19	248	230	206	126	114	50	34	50	75	96	16	9	4	ø11	7.1
KR3715 - 50A		2"		14	200	ø19	200			140	126	54	48	65	95	120	19	10	4	ø14	9.5
KR3705 - 50A	PF 1"	1 1/2"	1"	14	200	ø19	272	250	218	140	126	54	48	65	95	120	19	10	4	ø14	10.9
KR3725 - 50A	ø34.5	1 1/2"	1"	14	200	ø19	272	250	219	140	126	54	48	65	95	120	19	10	4	ø14	10.9
KR3715 - 65A		2 1/2"		16	220	ø23	210			145	129	58	60	80	110	136	20	12	4	ø14	13
KR3705 - 65A	PF 1 1/2"	2"	1 1/2"	16	220	ø23	295	265	225	145	129	58	60	80	110	136	20	12	4	ø14	14.8
KR3725 - 65A	ø49	2"	1 1/2"	16	220	ø23	295	265	243	145	129	58	60	80	110	136	20	12	4	ø14	14.8
KR3715 - 80A		3"		16	240	ø23	250			170	154	62	70	90	125	154	20	12	6	ø14	19.2
KR3705 - 80A	PF 2"	2 1/2"	2"	16	240	ø23	351	315	265	170	154	62	70	90	125	154	20	12	6	ø14	21.9
KR3725 - 80A	ø61	2 1/2"	2"	16	240	ø23	351	315	271	170	154	62	70	90	125	154	20	12	6	ø14	21.9

# 4000 SERIES KJC ROTARY JOINT



## ■ Operating Condition

Size Range : 50A~150A (2"~6")

Max. Pressure : 15kg/cm<sup>2</sup> (210PSI)

Max. Rotation Speed :

50A~100A (2"~4") : 300RPM

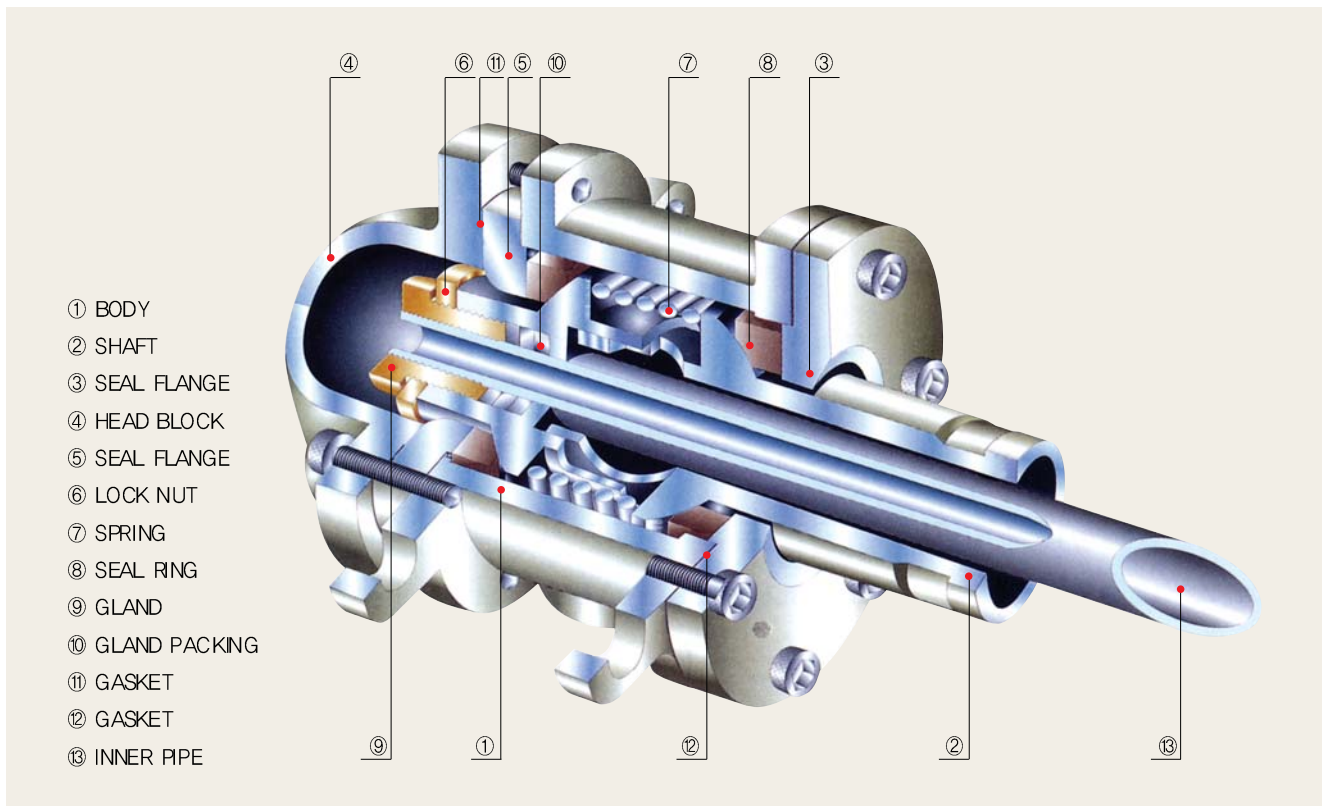
125A~150A (5"~6") : 150RPM

Max. Temperature : 220°C (420°F)

Media : Steam, Hot Oil

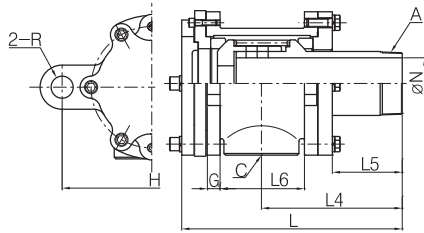
## ■ Features / 특징

- Simple Structure
  - Easily field repairable
  - Dual Spherical Sealing
  - Self-Alignment rotating union
  - Low-friction / High speed rotation
  - Non-Lubrication
  - Suitable for High temp. Steam & Oil
- 구조가 간단하여 보수가 용이합니다.
  - 2개의 구면Seal을 가진 자기조심형으로 회전저항이 작아 고속회전이 가능합니다.
  - 무 주유형으로 고온의 스팀, 열유에 적합합니다.

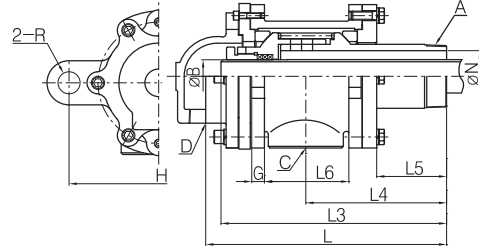


# 4000 SERIES KJC ROTARY JOINT

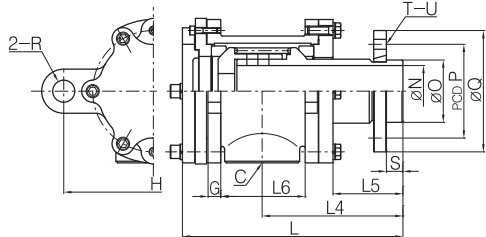
KR4011  
KR4012



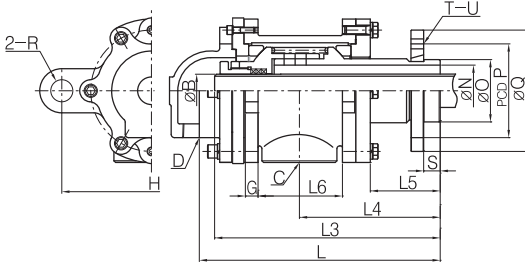
KR4021  
KR4022



KR4015



KR4025



(Unit : mm)

Model No.	A (P1)	B (Ø)	C (P1)	D (P1)	G	H	L	L3	L4	L5	L6	N	O	P	Q	R	S	T	U	Wt (kg)
KR4011 (Ø) - 50A	2" RH (LH)		2"		15	200	237		150	80	76	45				Ø21				12.5
KR4021 (Ø) - 50A	2" RH (LH)	33	1½"	1"	15	200	265	245	150	80	76	45				Ø21				12.5
KR4015 - 50A	Flange		2"		15	200	237		150	80	76	45	59.5	100	130	Ø21	25	4	Ø14	13.7
KR4025 - 50A	Flange	33	1½"	1"	15	200	265	245	150	80	76	45	59.5	100	130	Ø21	25	4	Ø14	14.2
KR4011 (Ø) - 65A	2½" RH (LH)		2½"		14	220	266		144	75	90	57				Ø22				15
KR4021 (Ø) - 65A	2½" RH (LH)	33	2"	1"	14	220	290	270	144	75	90	57				Ø22				15
KR4015 - 65A	Flange		2½"		14	220	266		144	75	90	57	75.5	120	167	Ø22	25	4	Ø14	16.6
KR4025 - 65A	Flange	33	2"	1"	14	220	290	265	154	85	90	57	75.5	120	167	Ø22	25	4	Ø14	18.6
KR4011 (Ø) - 80A	3" RH (LH)		3"		18	250	299		189	98	96	72				Ø26				26
KR4021 (Ø) - 80A	3" RH (LH)	42	2½"	1¼"	18	250	339	300	189	98	96	72				Ø26				26
KR4015 - 80A	Flange		3"		18	250	299		189	98	96	72	87.5	145	190	Ø26	25	4	Ø18	29
KR4025 - 80A	Flange	42	2½"	1¼"	18	250	339	300	189	98	96	72	87.5	145	190	Ø26	25	4	Ø18	32
KR4011 (Ø) - 90A	3½" RH (LH)		3½"		23	300	335		208	103	115	88				Ø31				35
KR4021 (Ø) - 90A	3½" RH (LH)	48	3"	1½"	23	300	368	342	208	103	115	88				Ø31				39
KR4015 - 90A	Flange		3½"		23	300	335		208	103	115	88	100	150	195	Ø31	25	4	Ø18	39
KR4025 - 90A	Flange	48	3"	1½"	23	300	368	342	208	103	115	88	100	150	195	Ø31	25	4	Ø18	43
KR4011 (Ø) - 100A	4" RH (LH)		4"		23	325	407		258	131	153	98				Ø40				53
KR4021 (Ø) - 100A	4" RH (LH)	60	3½"	2"	23	325	443	415	258	131	153	98				Ø40				53
KR4015 - 100A	Flange		4"		23	325	407		258	131	153	98	113	170	220	Ø40	30	6	Ø18	57
KR4025 - 100A	Flange	60	3½"	2"	23	325	443	415	258	131	153	98	113	170	220	Ø40	30	6	Ø18	64
KR4011 (Ø) - 125A	5" RH (LH)		5"		23	380	445		268	119	196	118				Ø40				85
KR4021 (Ø) - 125A	5" RH (LH)	75	4"	2½"	23	380	509	470	268	119	196	118				Ø40				85
KR4015 - 125A	Flange		5"		23	380	445		268	119	196	118	138	200	250	Ø40	30	6	Ø20	101
KR4025 - 125A	Flange	75	4"	2½"	23	380	509	470	268	119	196	118	138	200	250	Ø40	30	6	Ø20	104
KR4011 (Ø) - 150A	6" RH (LH)		6"		27	500	522		316	143	220	145				Ø60				120
KR4021 (Ø) - 150A	6" RH (LH)	88	5"	3"	27	500	591	539	316	143	220	145				Ø60				120
KR4015 - 150A	Flange		6"		27	500	522		316	143	220	145	170	240	290	Ø60	35	12	Ø20	132
KR4025 - 150A	Flange	88	5"	3"	27	500	591	539	316	143	220	145	170	240	290	Ø60	35	12	Ø20	162

# 5000 SERIES KJC ROTARY JOINT



## ■ Operating Condition

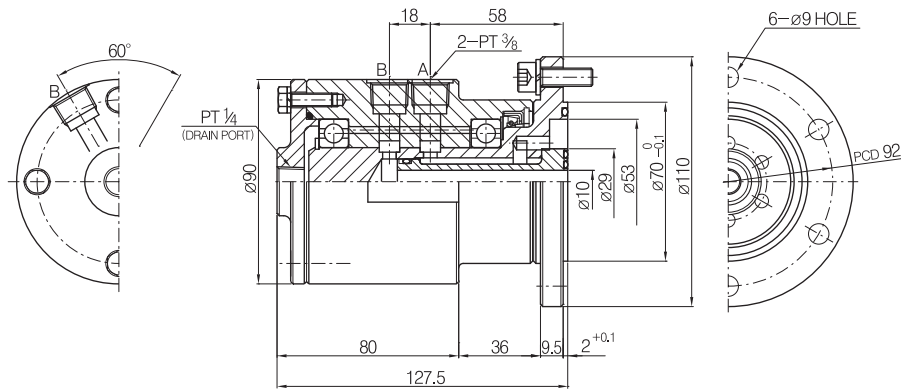
Size Range : 10A~40A ( $\frac{3}{8}$ "~ $1\frac{1}{2}$ "")  
 Max. Pressure : 140kg/cm<sup>2</sup> (2000PSI)  
 Max. Rotation Speed : 2000RPM  
 Max. Temperature : 80°C (180°F)  
 Media : Hydraulic Oil

## ■ Features / 특징

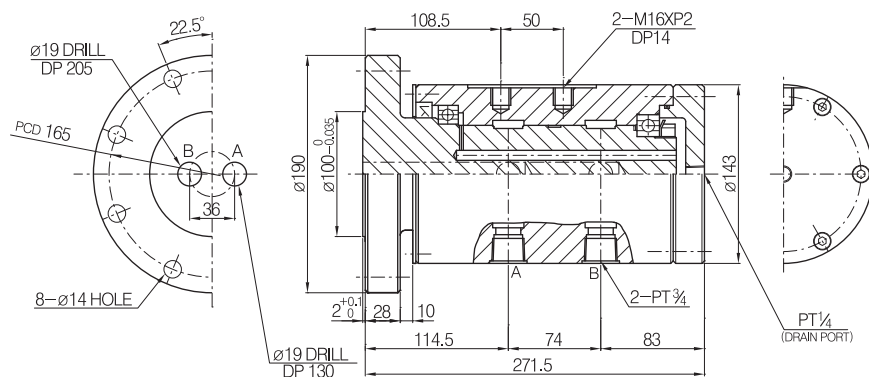
- Labyrinth Sealing structure
- Low friction at High pressure & High speed
- Long service life
- Continuous Oil pressure supply
- Drain port should keep open, never close

• 라비린스 Seal 방법을 이용한 구조로 설계되었으며, 고압, 고속에서도 낮은 회전저항과 긴 수명이 특징입니다.  
 • Series #5000은 지속적인 유압공급의 경우에 사용할 수 있으며 Drain Port는 항상 열려 있어야 되고 절대 잠겨서는 안됩니다.

## | BR5005-10A-8A

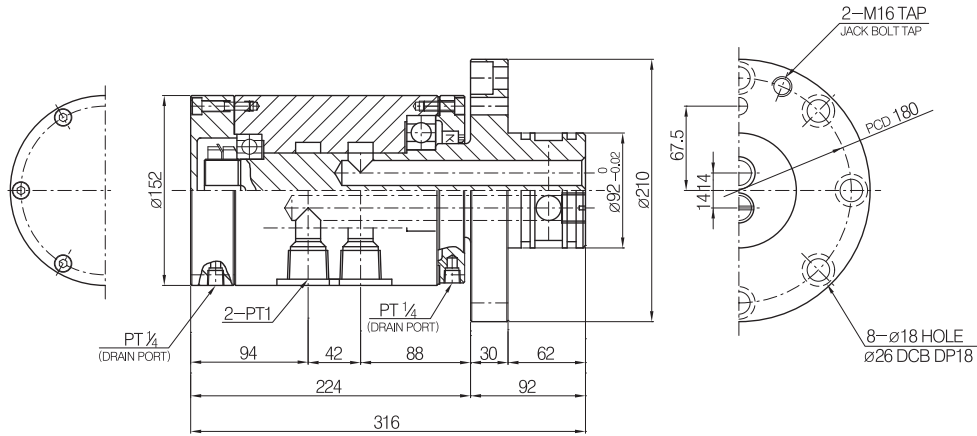


## | BR5105-20A-8A

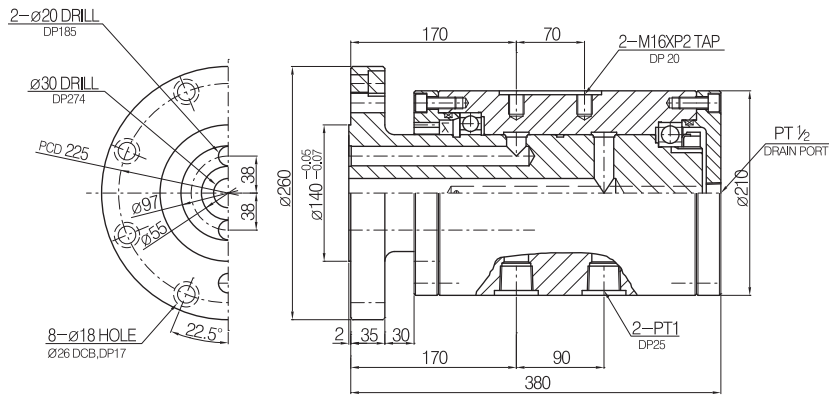


# 5000 SERIES KJC ROTARY JOINT

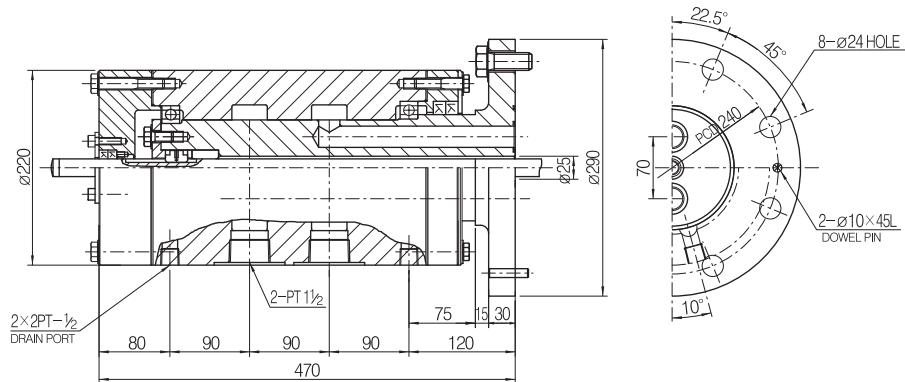
## BR5205-25A-8A



## BR5305-25A-15A

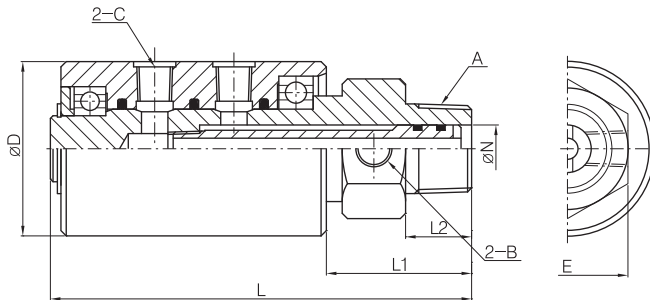


## BR5405-40A-15A



# 6000 SERIES KJC ROTARY JOINT

## BR6101-25A, BR6106-25A



### Operating Condition

- Max. Air Pressure : 10kg/cm<sup>2</sup> (150PSI)
- Max. Hydraulic Pressure : 140kg/cm<sup>2</sup> (2000PSI)
- Max. Rotation Speed : 250 RPM
- Max. Temperature : 100°C (210°F)
- Media : Air, Hydraulic Oil

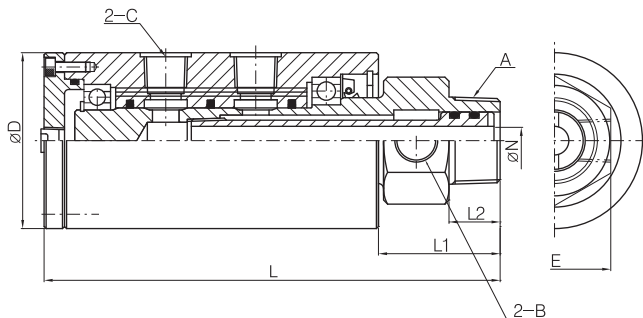
### Features / 특징

- For Low Speed rotation with Air/Oil pressure
- For Slit line, Press Automation Line of Steel Industry
- 저속의 공압용이나 유압용으로 개발된 제품이며 Slit 라인, Press 자동화 라인 등 철강산업에 많이 사용된다.

(Unit : mm)

Model No.	A	B (PT)	C (PT)	D	E	L	L1	L2	N
BR6101-25A	PT 1"	1/4"	1/4"	66	46	159.5	55	25	8
BR6106-25A	NPT 1"	1/4"	1/4"	66	46	159.5	55	25	8

## BR6701-32A, BR6706-32A



### Operating Condition

- Max. Air Pressure : 10kg/cm<sup>2</sup> (150PSI)
- Max. Hydraulic Pressure : 140kg/cm<sup>2</sup> (2000PSI)
- Max. Rotation Speed : 250 RPM
- Max. Temperature : 100°C (210°F)
- Media : Air, Hydraulic Oil

### Features / 특징

- Advanced model to BR6101, BR6106
- Leaking Oil can be retrieved to Oil tank through Drain port & pipe
- Clean operation can be made.
- 본 제품은 BR6101, BR6106보다 개선된 제품입니다. Drain Port가 있어 약간의 누유시 Drain pipe를 통해 Oil Tank로 회수되기 때문에 생산현장의 청결이 유지됩니다.

(Unit : mm)

Model No.	A	B (PT)	C (PT)	D	E	L	L1	L2	N
BR6701-32A	PT 1 1/4"	1/2"	1/2"	86	55	223	59.5	25	14
BR6706-32A	NPT 1 1/4"	1/2"	1/2"	86	55	223	59.5	25	14

# 6000 SERIES KJC ROTARY JOINT

## BR6011-10A, BR6011-15A, BR6011-20A

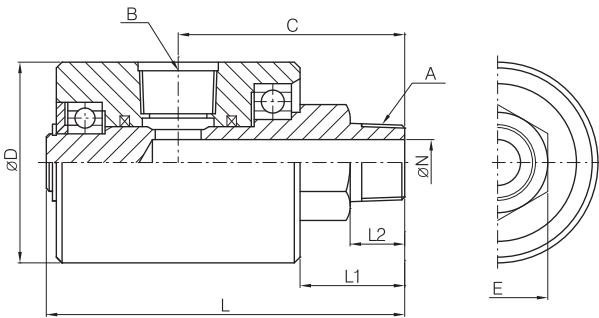


### Operating Condition

- Max. Air Pressure : 10kg/cm<sup>2</sup> (150PSI)
- Max. Hydraulic Pressure : 140kg/cm<sup>2</sup> (2000PSI)
- Max. Rotation Speed : 250 RPM
- Max. Temperature : 100°C (210°F)
- Media : Air, Hydraulic Oil

### Features / 특징

- For Low speed rotation with Air/Oil pressure
- 저속의 공압용이나 유압용으로 개발된 제품입니다.



(Unit : mm)

Model No.	A (P1)	B (P1)	C	D	E	L	L1	L2	N
BR6011-10A	3/8"	3/8"	51.5	40	22	80.5	25.5	14	8
BR6011-15A	1/2"	1/2"	73	60	32	115.5	32	18	13
BR6011-20A	3/4"	3/4"	79	70	35	125	36.5	19	16

## BR6205-15A

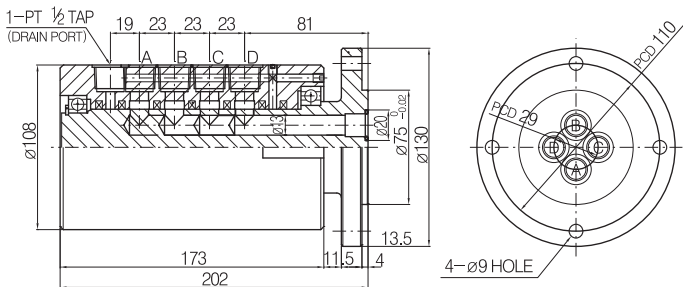


### Operating Condition

- Max. Air Pressure : 10kg/cm<sup>2</sup> (150PSI)
- Max. Hydraulic Pressure : 140kg/cm<sup>2</sup> (2000PSI)
- Max. Rotation Speed : 250 RPM
- Max. Temperature : 100°C (210°F)
- Media : Air, Hydraulic Oil

### Features / 특징

- Multi-level Index table mounted Air/Oil hydraulic machine
- Special Seal for long and stable service life
- Multi-port unions are available on order demand
- 다단계 인덱스테이블에 장치된 공압장비나 유압장비에 주로 사용되며 특수 Seal 사용으로 수명이 길고 안정적입니다.
- 주문시 다 Port Rotary Joint 제작도 가능합니다.









# 6000 SERIES KJC ROTARY JOINT

## ORS6314

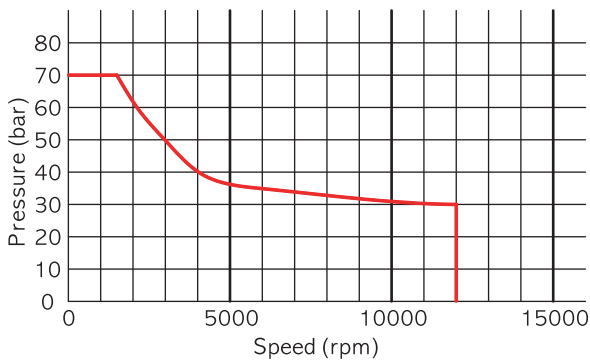


### Operating Condition

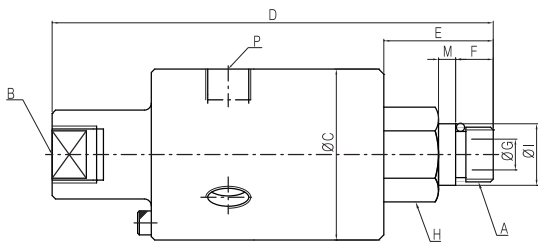
- Max. Coolant Pressure : 70bar (1,000psi)
- Max. Rotation Speed : 12,000/min (12,000rpm)
- Max. Temperature : 80°C (180°F)
- Media : Coolant, Hydraulic Oil
- Refer to graph for maximum pressure and speed combination

### Features / 특징

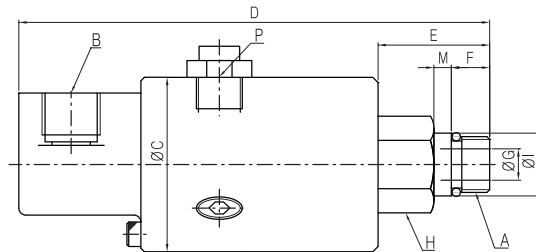
- For high speed drilling and transfer machine
- Special mechanical seal protection against abrasive fluid
- Other port size and connection unions are available on order demand



## ORS6314-M16-03



## ORS6314-M16-36



(Unit : mm)

Model No.	B	C	D	P	A	E	F	G	H	I	M
ORS6314-M16-03	G 3/8"	50	129	3-G 1/4"	M16×P1.5(LH)	32	11	9	24	17.998/17.988	5
ORS6314-M16-36	G 3/8"	50	135	3-G 1/4"	M16×P1.5(LH)	32	11	9	24	17.998/17.988	5

# 6000 SERIES KJC ROTARY JOINT

## ORS6314 (DRY RUNNING AT HIGH SPEEDS WITHOUT COOLANT PRESSURE)

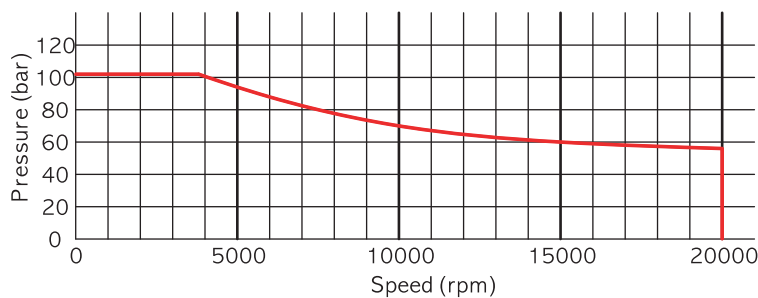


### Operating Condition

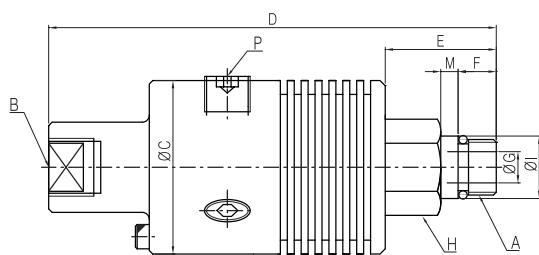
- Max. Coolant Pressure : 105bar (1,520psi)
- Max. Rotation Speed : 20,000/min (20,000rpm)
- Max. Temperature : 80°C (180°F)
- Media : Coolant, Hydraulic Oil
- Refer to graph for maximum pressure and speed combination

### Features / 특징

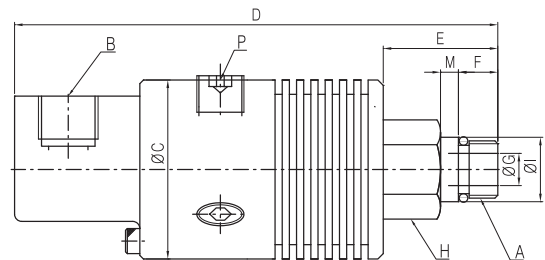
- For high speed drilling and transfer machine
- Special mechanical seal protection against abrasive fluid
- Other port size and connection unions are available on order demand



ORS6314-M16-35



ORS6314-M16-34



(Unit : mm)

Model No.	B	C	D	P	A	E	F	G	H	I	M
ORS6314-M16-35	G 3/8"	50	129	3-G 1/4"	M16 ×P1.5(LH)	32	11	9	24	17.993/17.988	5
ORS6314-M16-34	G 3/8"	50	135	3-G 1/4"	M16 ×P1.5(LH)	32	11	9	24	17.993/17.988	5



# 6000 SERIES KJC ROTARY JOINT

## ORS6414 (BEARING SUPPORTED)

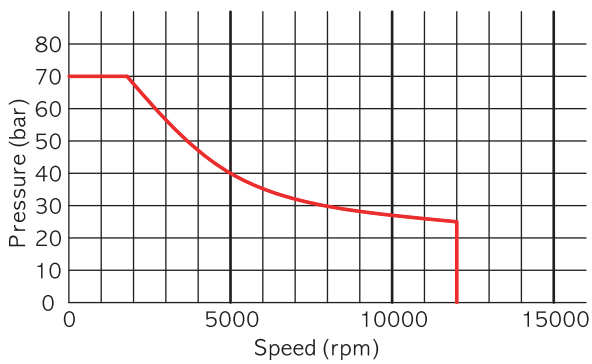


### Operating Condition

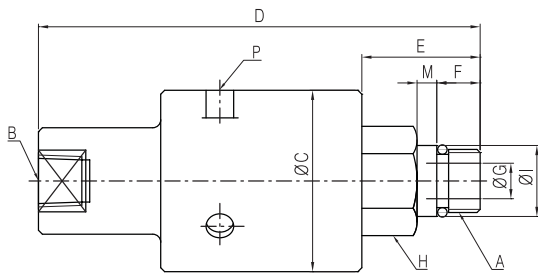
- Max. Coolant Pressure : 70bar (1,000psi)
- Max. Rotation Speed : 12,000/min (12,000rpm)
- Max. Temperature : 80°C (180°F)
- Media : Coolant, Hydraulic Oil
- Refer to graph for maximum pressure and speed combination

### Features / 특징

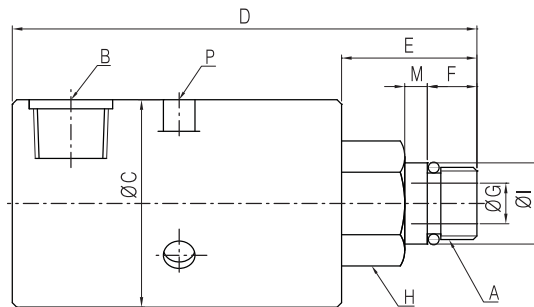
- For high speed spindle & Gundrill
- Special mechanical seal protection against abrasive fluid
- Other port size and connection unions are available on order demand



### ORS6414-M16-30



### ORS6414-M16-32



(Unit : mm)

Model No.	B	C	D	P	A	E	F	G	H	I	M
ORS6414-M16-30	1/4" NPT	46	112	3- $\phi$ 7	M16×P1.5(LH)	30	11	9	24	17.993/17.988	5
ORS6414-M16-32	3/8" NPT	46	103	3- $\phi$ 7	M16×P1.5(LH)	30	11	9	24	17.993/17.988	5

# 6000 SERIES KJC ROTARY JOINT

## ORS6414

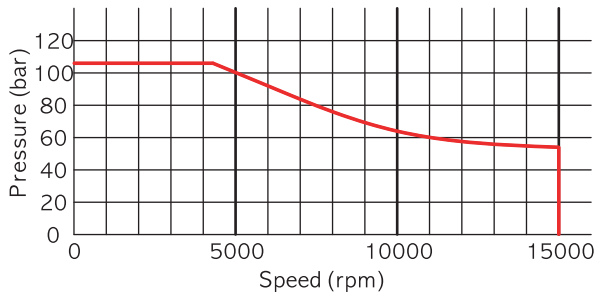


### Operating Condition

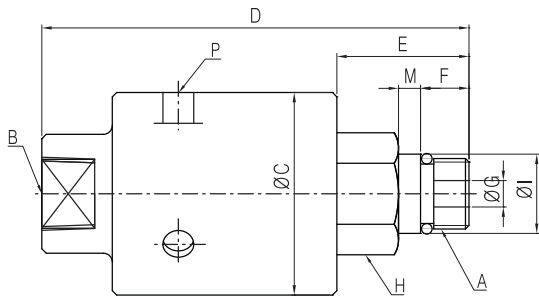
Max. Coolant Pressure : 105 bar (1,520psi)  
 Max. Rotation Speed : 15,000/min (15,000rpm)  
 Max. Temperature : 80°C (180°F)  
 Media : Coolant, Hydraulic Oil  
 Refer to graph for maximum pressure and speed combination

### Features / 특징

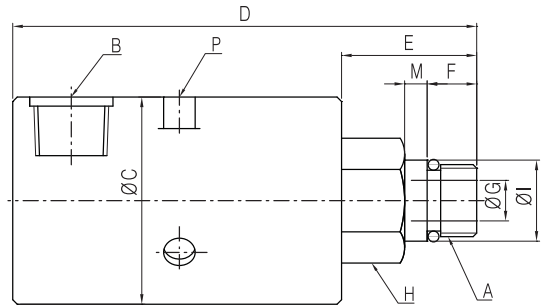
- For high speed spindle & Gundrill
- Special mechanical seal protection against abrasive fluid
- Other port size and connection unions are available on order demand



### ORS6414-M16-29



### ORS6414-M16-34



(Unit : mm)

Model No.	B	C	D	P	A	E	F	G	H	I	M
ORS6414-M16-29	3/8" NPT	46	97	3- $\phi$ 7	M16×P1.5(LH)	30	11	6	24	17.993/17.988	5
ORS6414-M16-34	G 3/8"	46	97	3- $\phi$ 7	M16×P1.5(LH)	30	11	6	24	17.993/17.988	5



# 6000 SERIES KJC ROTARY JOINT

## ORS6418 (UNIVERSAL)



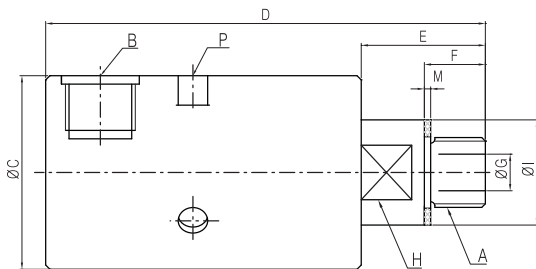
### Operating Condition

- Max. Coolant Pressure : 50bar (734psi)
- Max. Rotation Speed : 3,500/min (3,500rpm)
- Max. Temperature : 175°C (350°F)
- Media : Poor filtrated water, Hot oil, Steam
- Fluid pressure over 8bar is allowed only when the fluid is cool water at max 50°C
- In applications with hot oil : max rotation speed is 300rpm

### Features / 특징

- Special microlapped mechanical seal protection against abrasive fluid
- Other port size and connection unions are available on order demand

## ORS6418-10A-08



(Unit : mm)

Model No.	B	C	D	P	A	E	F	G	H	I	M
ORS6418-10A-08	G 3/8"	46	104.5	3-φ7	G 3/8" (RH)	29.5	14.5	8.7	19	25	1.5



# 6000 SERIES KJC ROTARY JOINT

## ORS6418



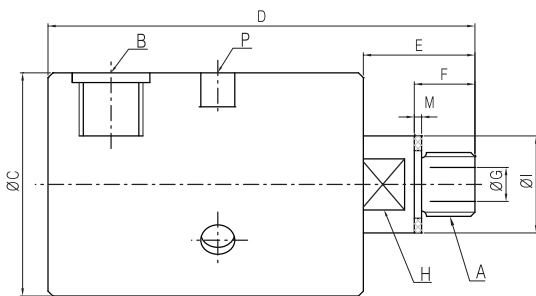
### Operating Condition

Max. Coolant Pressure : 10bar (150psi)  
 Max. Rotation Speed : 3,500/min (3,500rpm)  
 Max. Temperature : 120°C (250°F)  
 Media : Air, Vacuum, Hydraulic oil

### Features / 특징

- Special microlapped mechanical seal protection against abrasive fluid
- Other port size and connection unions are available on order demand

## ORS6418-8A-05



(Unit : mm)

Model No.	B	C	D	P	A	E	F	G	H	I	M
ORS6418-8A-05	G 1/4"	46	88	3- $\phi$ 7	G 1/4" (RH)	23	12.5	7	17	20	1.5



# 6000 SERIES KJC ROTARY JOINT

## BR6414-M16

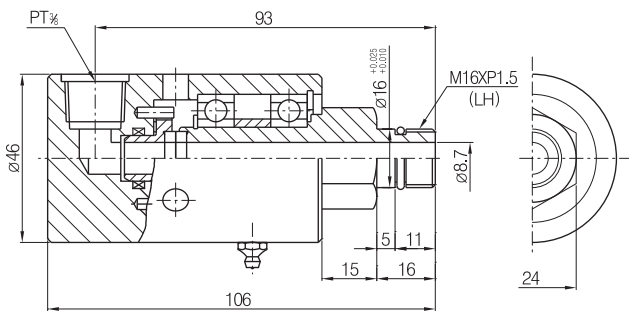


### Operating Condition

- Max. Coolant Pressure : 70kg/cm<sup>2</sup> (1000PSI)
- Max. Rotation Speed : 12,000 RPM
- Max. Temperature : 80°C (180°F)
- Media : Coolant, Hydraulic Oil

### Features / 특징

- For High speed Spindle & Gundrill
- Special Mechanical Seal protection against abrasive fluid.
- 고속으로 회전하는 장비의 스피indle나 Gun Drill용으로 설계된 제품입니다.
- 특수재질의 매카니컬씰의 사용으로 마모성 물질이 있는 유체에서도 사용 가능합니다.



## BR6505-15A

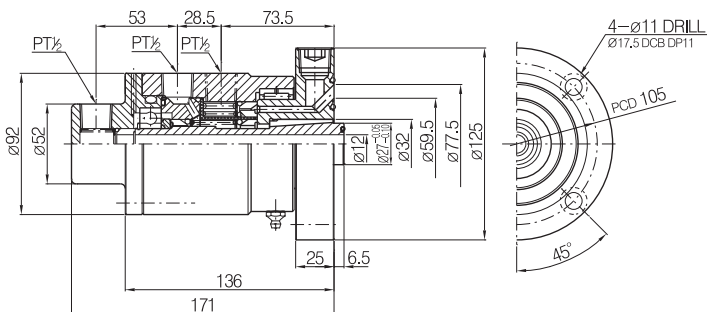


### Operating Condition

- Max. Air Pressure : 10kg/cm<sup>2</sup> (150PSI)
- Max. Rotation Speed : 1,000 RPM
- Max. Temperature : 100°C (210°F)
- Media : Air

### Features / 특징

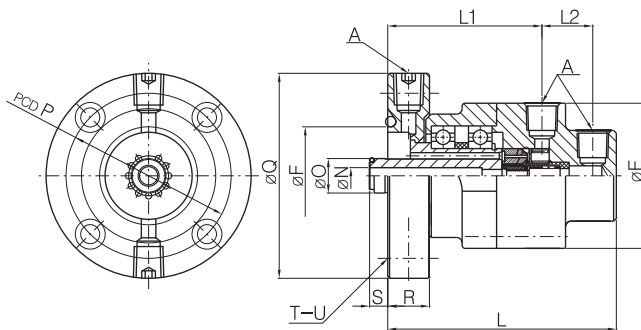
- For Tire Mold & Press Clutch
- Low Friction at High speed rotation by Mechanical Seal structure
- 타이어몰드 및 프레스 클러치 용으로 개발된 제품입니다.
- 메카니컬 씰구조로 되어 있어 회전저항이 아주 적어 고속회전이 가능합니다.





# 6000 SERIES KJC ROTARY JOINT

## OR6505-10A, OR6505-15A, OR6505-20A, OR6505-25A



### Operating Condition

Max. Air Pressure : 10kg/cm<sup>2</sup> (150PSI)  
 Max. Rotation Speed : 1000 RPM  
 Max. Temperature : 100°C (210°F)  
 Media : Air

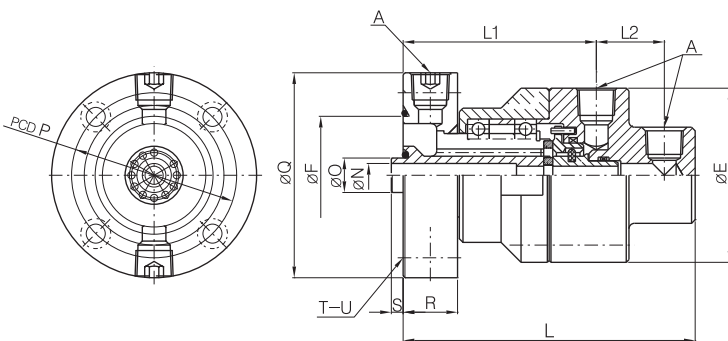
### Features / 특징

- For Tire Mold & Press Clutch
- Low Friction at High speed rotation by Mechanical Seal structure
- 타이어몰드 및 프레스 클러치용으로 개발된 제품입니다.
- 메카니칼 씰구조로 되어 있어 회전저항이 아주 적어 고속회전이 가능합니다.

(Unit : mm)

Model No.	A (PT)	E	F	L	L1	L2	N	O	P	Q	R	S	T	U (Ø)
OR6505-10A	3/8"	80	54	126	85	28	9	19	91	113	23	10	4	105
OR6505-15A	1/2"	96	65	161	106.5	37.5	13	19	91	110	30	6.5	4	105
OR6505-20A	3/4"	118	69.8	196	103	73	20	28.5	106	130	31	9.5	4	14
OR6505-25A	1"	142	114.5	232	117	90.5	28	38	154	188	48.5	12.5	4	18

## OR6605-10A, OR6605-15A



### Operating Condition

Max. Air Pressure : 10kg/cm<sup>2</sup> (150PSI)  
 Max. Hydraulic Pressure : 70kg/cm<sup>2</sup> (1000PSI)  
 Max. Rotation Speed : 300 RPM  
 Max. Temperature : 100°C (210°F)  
 Media : Air, Hydraulic Oil

### Features / 특징

- For Dual action Hydraulic Oil Cylinder
- Duoflow
- Low Friction at High speed rotation by Mechanical Seal structure
- 두가지 작동을 하는 유압용 실린더에 많이 사용되고 있는 복식회로의 제품입니다.
- 메카니칼 씰구조로 되어 있어 고압에서도 회전저항이 아주 적어 고속회전이 가능합니다.

(Unit : mm)

Model No.	A (PT)	E	F	L	L1	L2	N	O	P	Q	R	S	T	U (Ø)
OR6605-10A	3/8"	80	54	126	85	28	10	19	91	113	23	10	4	105
OR6605-15A	1/2"	96	65	161	106.5	37.5	13	19	91	113	30	6.5	4	105



# 7200 SERIES KJC ROTARY JOINT



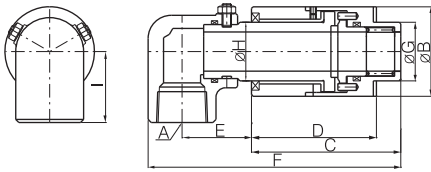
## Operating Condition

- Max. Water Pressure : 15kg/cm<sup>2</sup> (210PSI)
- Max. Rotation Speed : 100RPM
- Max. Temperature : 100°C (210°F)
- Media : Water

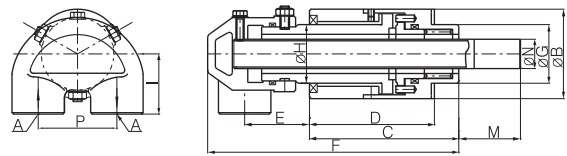
## Features / 특징

- Designed to be mounted inside of the cylinders on the continuous casting line.
- Body Insert Type & Full Insert Type available
- 연속주조 설비에 사용하도록 개발된 제품이며 Body 매립형 과 완전 매립형이 생산되고 있습니다.

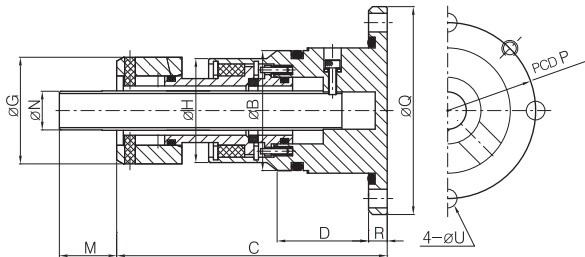
BR7211



BR7201



BR7205

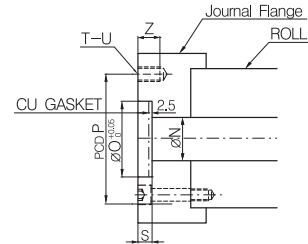
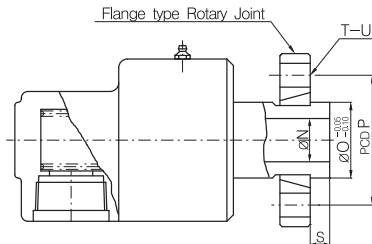


(Unit : mm)

Model No.	A (P1)	B	C	D	E	F	G	H	I	M	N	P	Q	R	U
BR7211-20A	3/4" RH	46	67	57	54.5	140.5	27	28	34						
BR7201-20A	3/4" RH	58	96.8	81	42	162.8	38	38	39	40	19	51			
BR7211-25A	1" RH	58	96.8	81	45	162.8	38	38	46						
BR7201-25A	1" RH	70	100	85	66	197	49	50	46	38	28	64			
BR7205-15A	Flange	45	101.5	29			40	39		14.5	14.5	66	78	7	7

# KJC Rotary Joint Accessories

## Journal Flange



### ■ #1000, #2200, #2300, #3000, #3200, #3700

(Unit : mm)

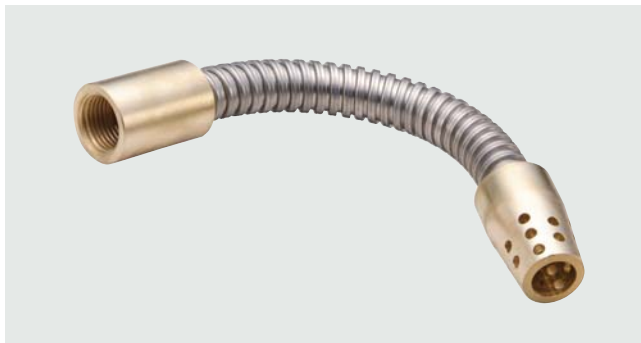
Nominal Size	N'	O'	P	S'	T	U'	Z
15A	1/2"	14	25	45	8	4	M8
20A	3/4"	18	30	54	8	4	M10
25A	1"	23	35	60	9	4	M10
40A	1 1/2"	34	50	75	9	4	M10
50A	2"	48	65	95	10	4	M12
65A	2 1/2"	60	80	110	12	4	M12
80A	3"	70	90	125	12	6	M12

### ■ #4000

(Unit : mm)

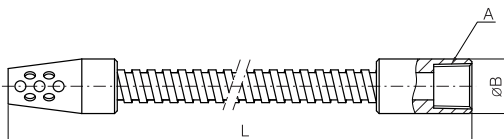
Nominal Size	N'	O'	P	S'	T	U'	Z
50A	2"	45	59.5	100	25	4	M12
65A	2 1/2"	57	75.5	120	25	4	M12
80A	3"	72	87.5	145	25	4	M16
90A	3 1/2"	83	100	150	25	4	M16
100A	4"	93	113	170	30	6	M16
125A	5"	118	138	200	30	6	M18
150A	6"	145	170	240	35	12	M18

## Syphon Hose



### ■ Features / 특징

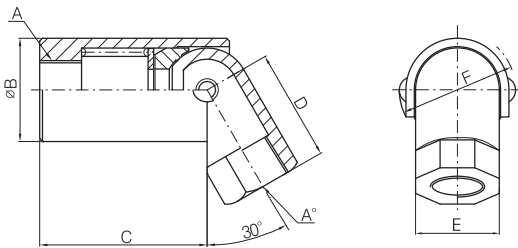
- Fixed Style Syphon
- Recommended for less than Ø500 sized diameter of the roll.
- ※ When you order syphon hose, please inform us of the length of horizontal pipe and inner diameter of the roll.
- Syphon hose는 고정형 사이펀으로 Roll의 내경이 Ø500 이하 일 때 추천합니다.
- ※ 주문시 수평 파이프와 Roll의 내경을 알려 주십시오.



(Unit : mm)

Nominal Size	A(PT)	B
6A	1/8"	19
8A	1/4"	19
10A	3/8"	22
15A	1/2"	28
20A	3/4"	38

## Syphon Elbow



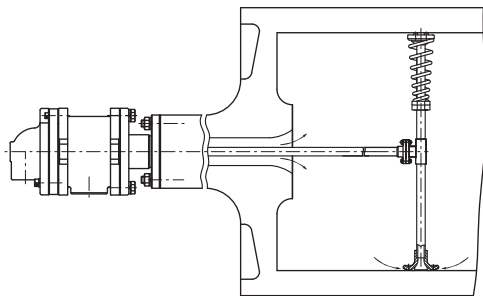
### ■ Features / 특징

- Pin connection between Horizontal & Vertical pipes allows free bending
- Spherical Seal face & Teflon Sealing
- Fixed type Syphon Elbow is recommended for over Ø500 sized rolls.
- Please Operate under 200RPM for Roll 60" in paper industry.
- 수평파이프와 수직파이프는 핀에 의해 연결되어 있으므로 자유롭게 굽혀집니다. 씰면은 구면이고 테프론 씰에 의해 밀봉됩니다. Syphon Elbow는 고정형 사이펀으로 Ø500 이상의 Roll에 추천합니다.  
특히 제지용 Roll 60"에서는 200RPM 이하에서 사용하십시오.

(Unit : mm)

Nominal Size	A (P/P)	A° (P°)	B	C	D	E	F	Net Wt. kg
10A	3/8"	3/8"	37	60	40	30	37	0.5
15A	1/2"	1/2"	37	60	40	30	37	0.5
20A	3/4"	3/4"	45	70	50	36	46	0.8
25A	1"	1"	50	85	60	42	51	1.0
32A	1 1/4"	1 1/4"	62	95	70	52	63	1.8
40A	1 1/2"	1 1/2"	70	105	80	60	71	2.3

## Rotary Syphon Scoop (RS-ST)



### ■ Operating Condition

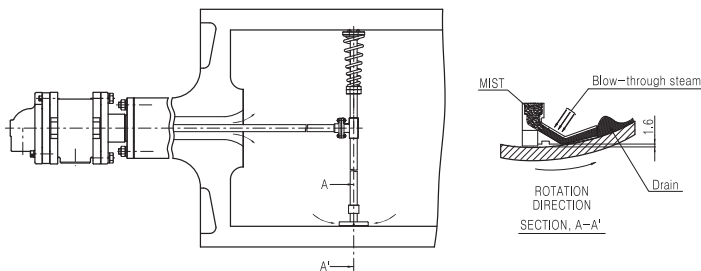
- Speed : 200~600m/min

### ■ Features / 특징

- Rotating Syphon for Paper Dryer
- Shell & Scoop Distance ≒ 1.6mm
- Thin Rimming Thickness for higher heat transfer rate.
- 제지용 드라이어의 회전형 Syphon으로서 Shell과 Scoop의 간격이 1.6mm 정도 유지되도록 하여 열전도를 방해하는 Rimming의 두께를 얇게 되도록 설계하였습니다.

# KJC Rotary Joint Accessories

## Rotary Syphon Scoop (RS-LH)



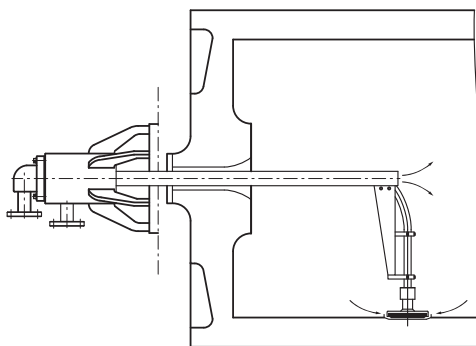
### ■ Operating Condition

- Speed : 200~1000m/min

### ■ Features / 특징

- Rotating Syphon for Paper Dryer
- Condensation water can be used either Pond or Rimming Condition
- 제지용 드라이어의 회전형 Syphon으로서 응축수가 Pond 상태 또는 Rimming 상태에서도 사용 가능하도록 설계하였습니다.

## Stationary Syphon Scoop (SS-HS)



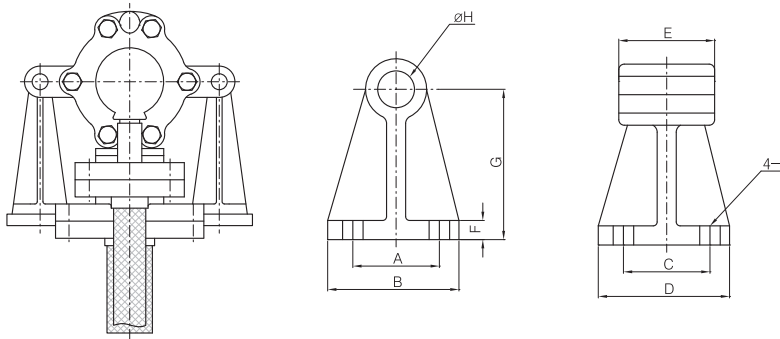
### ■ Operating Condition

- Speed : 200~1500m/min

### ■ Features / 특징

- Fixed type Syphon for Paper Dryer
- Condensation water can be used either Pond or Rimming Condition
- When processing speed is over 300m/min, Attaching Spoiler bar is efficient way to remove condensation water and increase heat transfer rate.
- 제지용 드라이어의 고정형 Syphon으로서 도면 응축수가 Pond 상태 또는 Rimming 상태에서도 사용 가능하도록 설계하였습니다.
- 속도가 300m/min 이상일때 Spoiler bar를 설치하면 효과적으로 응축수를 제거하여 열효율을 높일 수 있습니다.

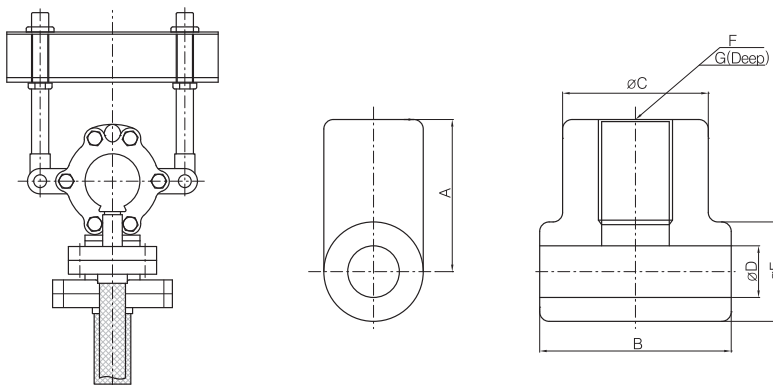
## Joint Stand-1



(Unit : mm)

Nominal Size		A	B	C	D	E	F	G	H	I
50A	2"	50	80	50	80	50	12	150	21	ø15
65A	2½"	50	80	50	80	60	12	150	21	ø15
80A	3"	50	80	80	110	60	15	150	26	ø15
90A	3½"	50	80	80	110	80	15	150	31	ø15
100A	4"	80	120	100	140	90	15	150	40	ø19
125A	5"	80	120	120	160	120	20	200	40	ø19
150A	6"	100	160	100	160	160	18	250	60	ø26

## Joint Stand-2



(Unit : mm)

Nominal Size		A	B	C	D	E	F	G
50A	2"	60	50	40	21	48	M20	35
65A	2½"	60	60	40	21	48	M20	35
80A	3"	60	60	40	26	48	M20	35
90A	3½"	70	80	50	31	55	M24	42

# Swivel Joint Series

Kwangjin develops various types of swivel joints from low pressure to high pressure in order to meet the demands from diverse industries.



SWIVEL JOINTS

# KJC Swivel Joint SERIES

## Model Identification / 모델분류

**K J** • **1 0 0** • **A**

### GROUPING

KJ Standard  
BJ Sub-standard  
OJ Special

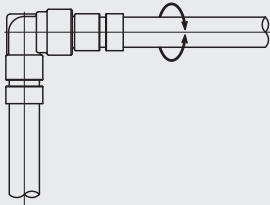
### SERIES

100 Bellow Type  
200 Spherical Seal  
300 O-Ring Seal  
400 Packing Seal  
500 Flange Type  
600 Balance Type

### STYLE

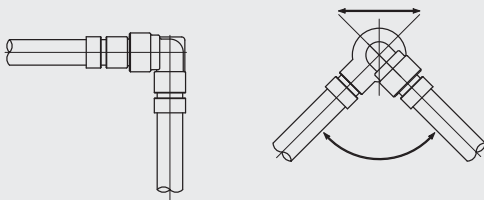
A 0°  
B 90°  
C 90°  
D 180°  
E 90° (Two-Joints)

## Application Examples / 사용방법



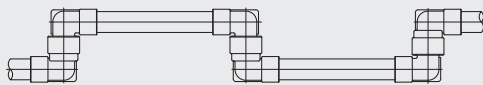
- Connecting part between fixed pipe and rotating pipe. (Type B,C)  
고정배관과 반복 회전체의 배관 연결부 (Type B,C)

• Application / 사용 설비  
HOSE REEL  
ROTARY COIL CUTTER



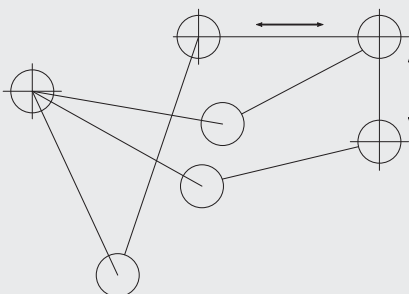
- Connecting part between linear action pipe and rotating pipe. (Type C)  
직선운동하는 배관과 회전운동 배관의 연결부 (Type C)

• Application / 사용 설비  
HOT PRESS  
TIRE MOLDING MACHINE  
DIECASTING MACHINE  
INJECTION MOLDING MACHINE



- Connecting part between fixed pipe and linear action pipe. (Type C,D)  
고정배관과 직선운동 배관의 연결부 (Type C,D)

• Application / 사용 설비  
HYDRAULIC SYSTEM  
LOADING ARM





# 100 SERIES KJC SWIVEL JOINT

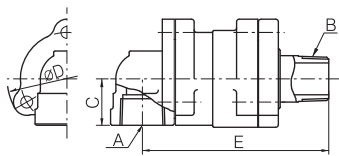
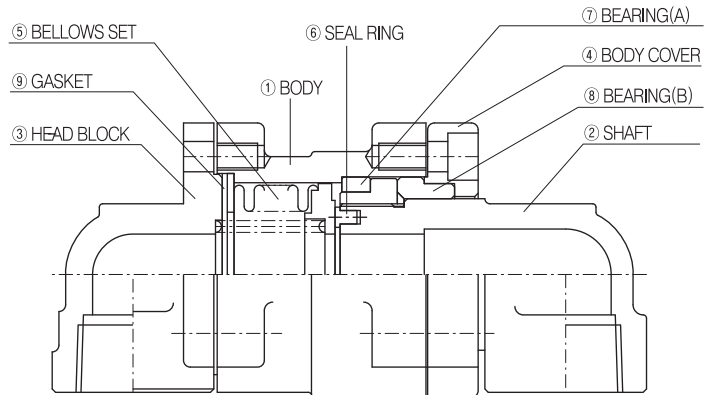


## ■ Operating Condition

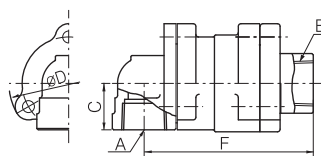
Size Range : 15A~25A (1/2"~1")  
 Max. Pressure : 23kg/cm<sup>2</sup> (330PSI)  
 Max. Rotation Speed : 10RPM  
 Max. Temperature : 220°C (430°F)  
 Media : Steam, Hot Oil, Water

## ■ Features / 특징

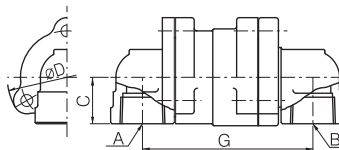
- Bellows Mechanical Seal Type
- Non-Lubricating Type
- Switchable between Heating & Cooling water
- Series KJ100은 벨로즈메카니칼 씰 형태의 스윙블 조인트로 무주유형입니다.
- 온수 및 냉각수 교대사용이 가능합니다.



Type B



Type C



Type D

(Unit : mm)

Nominal Size	A&B (E.D)	C	D	E	F	G
15A	1/2"	25	62	102	94	95
20A	3/4"	30	70	113	106	107
25A	1"	35	87	140	127	126





# 200 SERIES KJC SWIVEL JOINT

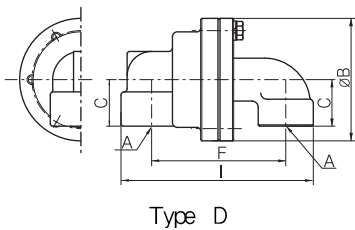
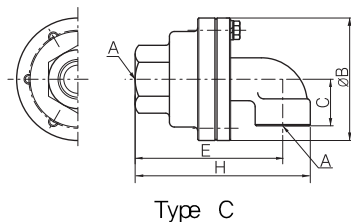
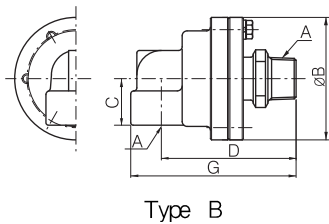
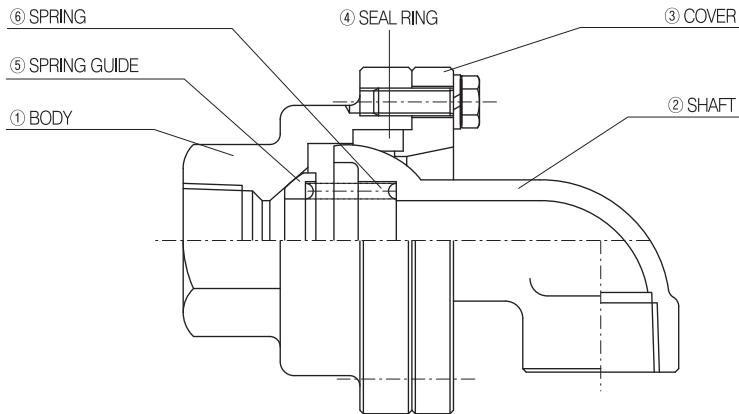


## ■ Operating Condition

Size Range : 15A~40A ( $\frac{1}{2}$ " ~  $1\frac{1}{2}$ "  
 Max. Pressure : 23kg/cm<sup>2</sup> (330PSI)  
 Max. Rotation Speed : 10RPM  
 Max. Temperature : 220°C (430°F)  
 Media : Steam, Hot Oil, Water

## ■ Features / 특징

- Spherical Seal Type
- Auto adjustment for Shaft angle
- Switchable between Heating & Cooling water
- Designed to Hot press for Tire mold
- Series KJ200은 구면씰 형식으로 Shaft의 각도 편심이 자동보상되며 온수 및 냉각수의 교대 사용이 가능하며 특히 타이어몰드의 Hot press의 배관에 추천됩니다.



(Unit : mm)

Nominal Size	A (PT)	B	C	D	E	F	G	H	I
15A	$\frac{1}{2}$ "	70	30	84	82	75	100	98	107
20A	$\frac{3}{4}$ "	85	30	97	93	92	116	111	130
25A	1"	100	38	110	120	110	135	143	157
32A	$1\frac{1}{4}$ "	118	45	131	145	140	159	173	196
40A	$1\frac{1}{2}$ "	126	55	140	150	140	170	180	202

# 300 SERIES KJC SWIVEL JOINT

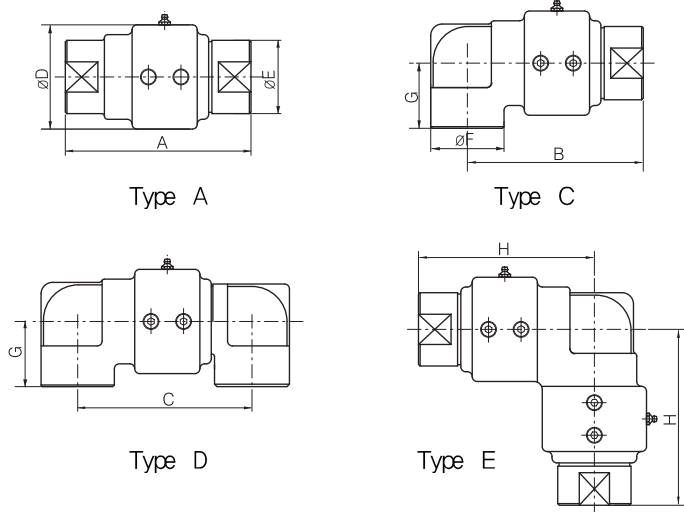
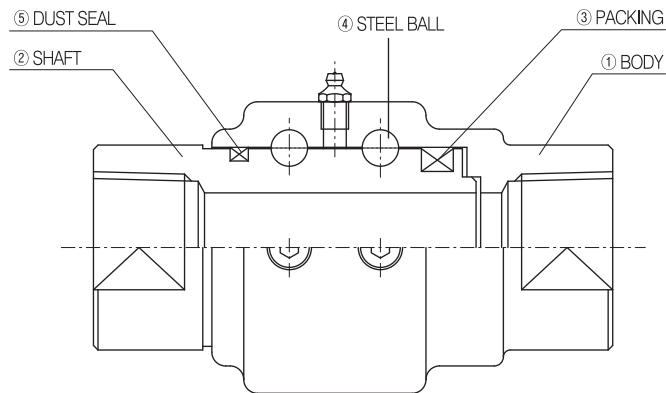


## Operating Condition

Size Range : 10A~100A ( $\frac{3}{8}$ "~4")  
 Max. Pressure : 40kg/cm<sup>2</sup> (560PSI)  
 Max. Temperature :  
     100°C (210°F) NBR Packing  
     180°C (360°F) Viton Packing  
 Media : Air, Oil, Water

## Features / 특징

- O-ring Seal
- Double row steel balls, supporting pressure compensation
- Extended service life by Precision processing
- Series K.300은 O-Ring Seal 형식이며 압력에 대한 보상은 2줄 강구에 의해 지지되며 특히 정밀가공으로 안정된 수명을 보장합니다.



(Unit : mm)

Nominal Size	A	B	C	D	E	F	G	H
10A $\frac{3}{8}$ "	86	73	74	48	34	30	30	73
15A $\frac{1}{2}$ "	86	73	74	48	34	30	30	73
20A $\frac{3}{4}$ "	114	108	107	64	48	45	40	108
25A 1"	114	108	107	64	48	45	40	108
32A $1\frac{1}{4}$ "	117	114	110	78	66	60	50	114
40A $1\frac{1}{2}$ "	117	114	110	78	66	60	50	114
50A 2"	150	146	150	100	80	80	70	145
65A $2\frac{1}{2}$ "	155	146	161	120	92	92	80	146
80A 3"	212	220	223	148	110	110	100	199
100A 4"	230	259	269	180	140	140	120	235



# 400 SERIES KJC SWIVEL JOINT

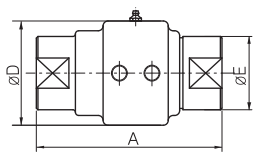
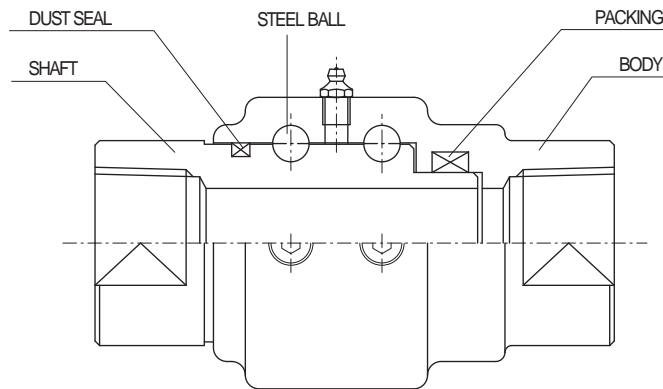


## ■ Operating Condition

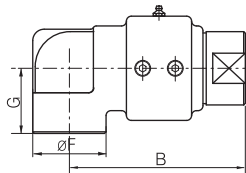
Size Range : 10A~100A ( $\frac{3}{8}$ "~4")  
 Max. Pressure : 210kg/cm<sup>2</sup> (3000PSI)  
 Max. Temperature :  
     100°C (210°F) NBR Packing  
     180°C (360°F) Viton Packing  
 Media : Air, Oil, Water, Hydraulic Oil

## ■ Features / 특징

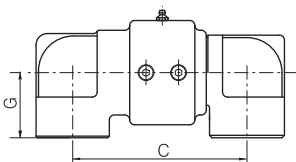
- Special Packing Seal
- Double row steel balls supporting pressure compensation
- Low Torque at High Pressure
- Series KJ400은 특수팩킹 Seal 형식이며 압력에 대한 보상은 2줄 강구에 의해 지지되며 고압에서도 낮은 Torque가 특징입니다.



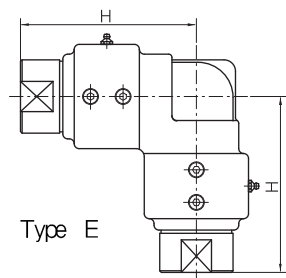
Type A



Type C



Type D



Type E

(Unit : mm)

Nominal Size		A	B	C	D	E	F	G	H
10A	$\frac{3}{8}$ "	86	73	74	48	34	30	30	73
15A	$\frac{1}{2}$ "	86	73	74	48	34	30	30	73
20A	$\frac{3}{4}$ "	114	108	107	64	48	45	40	108
25A	1"	114	108	107	64	48	45	40	108
32A	1 $\frac{1}{4}$ "	117	114	110	78	66	60	50	114
40A	1 $\frac{1}{2}$ "	117	114	110	78	66	60	50	114
50A	2"	150	146	150	105	80	80	70	145
65A	2 $\frac{1}{2}$ "	155	146	161	120	92	92	80	146
80A	3"	212	220	223	148	110	110	100	199
100A	4"	230	259	269	180	140	140	120	235

# 500 SERIES KJC SWIVEL JOINT

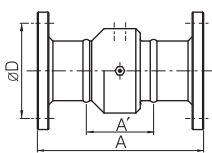
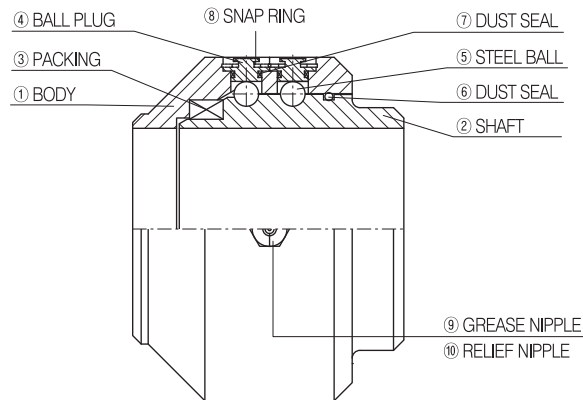


## Operating Condition

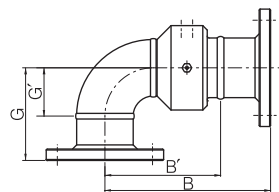
Size Range : 25A~400A (1"~16")  
 Max. Pressure : 20kg/cm<sup>2</sup> (280PSI)  
 Max. Temperature :  
 100°C (210°F) NBR Packing  
 180°C (360°F) Viton Packing  
 Media : Air, Oil, Water

## Features / 특징

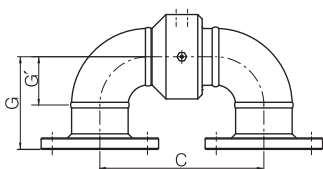
- Flange Type
- Double row steel balls supporting pressure compensation
- Extended service life by Precision processing
- Series KJ500은 후렌지형 스윙블조인트로 압력에 대한 보상은 2줄 강구에 의해 지지되며 특히 정밀가공으로 안정된 수명을 보장합니다.



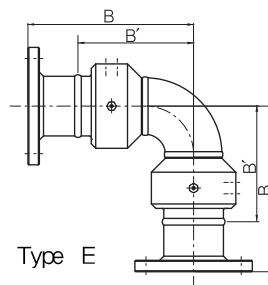
Type A



Type C



Type D



Type E

(Unit : mm)

Nominal Size	A	A'	B	B'	C	D	G	G'
25A	1"	187	76	170	114	152	64	94
32A	1 1/4"	203	89	194	137	184	65	105
40A	1 1/2"	215	91	210	148	205	72	119
50A	2"	220	93	233	169	245	82	140
65A	2 1/2"	250	110	243	174	237	104	133
80A	3"	255	115	261	191	267	118	146
100A	4"	272	120	298	222	323	145	178
125A	5"	304	126	342	253	380	176	216
150A	6"	334	156	397	308	461	206	241
200A	8"	368	165	470	368	571	259	305
250A	10"	397	194	550	448	702	322	356
300A	12"	436	207	626	512	817	374	419
350A	14"	470	216	699	572	927	418	483
400A	16"	476	222	755	628	1035	458	533



# 600 SERIES KJC SWIVEL JOINT

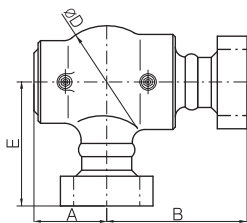
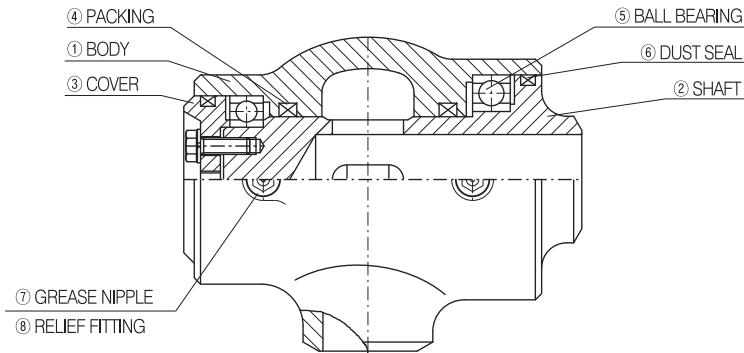


## ■ Operating Condition

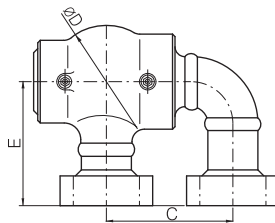
Size Range : 50A~150A (2" ~6")  
 Max. Pressure : 210kg/cm<sup>2</sup> (3000PSI)  
 Max. Temperature :  
     100°C (210°F) NBR Packing  
     180°C (360°F) Viton Packing  
 Media : Air, Oil, Water, Hydraulic Oil

## ■ Features / 특징

- Pressure Balance Type
- Low Torque at High pressure
- Extended service life
- Series KJ600은 압력밸런스 타입으로 고압에서 낮은 Torque와 제품의 긴 수명이 특징입니다.



Type C



Type D

(Unit : mm)

Nominal Size	A	B	C	D	E	
50A	2"	88	200	153	136	170
65A	2½"	103	220	184	166	185
80A	3"	109	240	207	173	200
100A	4"	141	270	274	206	235
125A	5"	155	310	324	295	300
150A	6"	195	450	400	370	430

# 610 SERIES KJC SWIVEL JOINT

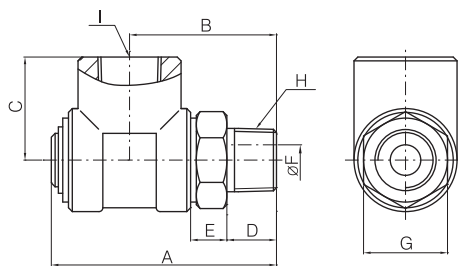
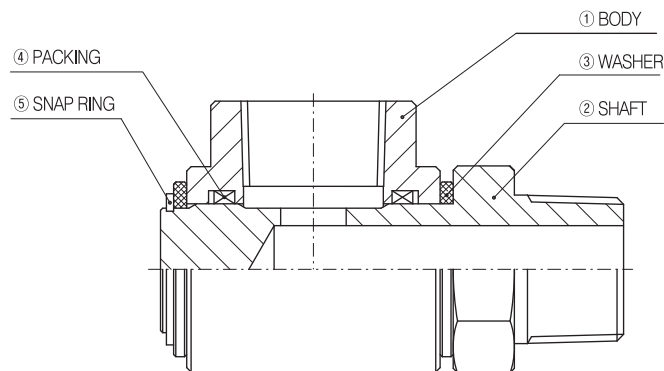


## Operating Condition

Size Range : 8A~50A( $\frac{1}{4}$ "~2")  
 Max. Pressure : 210kg/cm<sup>2</sup> (3000PSI)  
 Max. Temperature :  
 100°C (210°F) NBR Packing  
 180°C (360°F) Viton Packing  
 Media : Air, Oil, Water, Hydraulic Oil

## Features / 특징

- Pressure Balance Type
- Low Torque at High Pressure
- Extended service life
- Series KJ610은 압력밸런스 타입으로 고압에서 낮은 Torque와 제품의 긴 수명이 특징입니다.



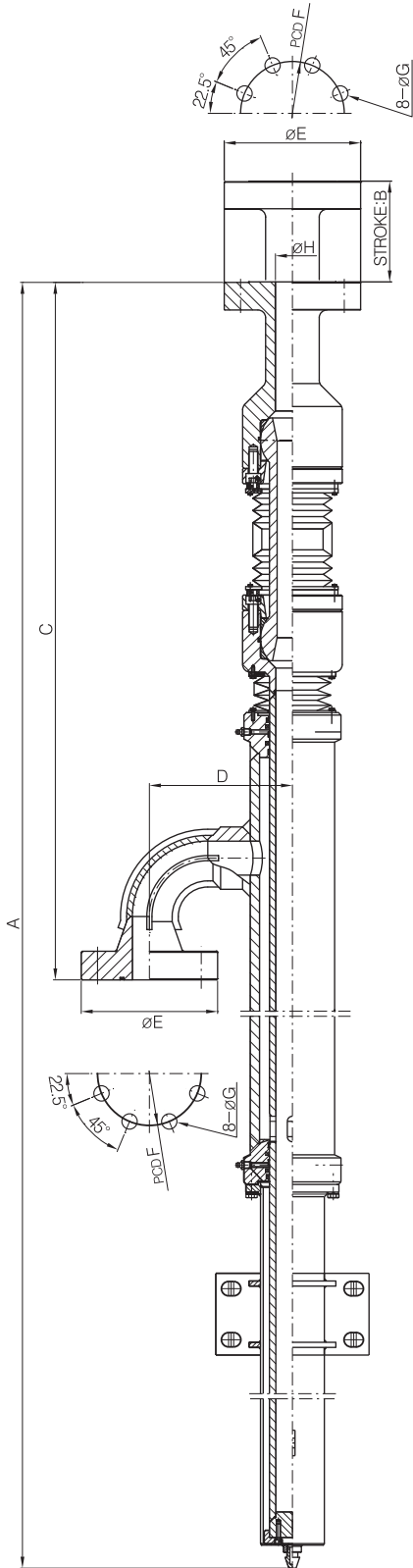
Type C

(Unit : mm)

Nominal Size	A	B	C	D	E	F	G	H (P1)	I (P1)
8A $\frac{1}{4}$ "	54.5	36	23	12	9.5	6	19	$\frac{1}{4}$	$\frac{1}{4}$
10A $\frac{3}{8}$ "	59	38.5	27	13	9.5	8	22	$\frac{3}{8}$	$\frac{3}{8}$
15A $\frac{1}{2}$ "	74.5	49.5	29	17	13	12	27	$\frac{1}{2}$	$\frac{1}{2}$
20A $\frac{3}{4}$ "	91	60	34	20	14.5	16	30	$\frac{3}{4}$	$\frac{3}{4}$
25A 1"	106	71	38.5	23	19	20	41	1	1
32A $1\frac{1}{4}$ "	121	79	44	25	20	28	50	$1\frac{1}{4}$	$1\frac{1}{4}$
40A $1\frac{1}{2}$ "	132	86	54	25	23	34	60	$1\frac{1}{2}$	$1\frac{1}{2}$
50A 2"	161	104	60	30	26	42	70	2	2



# 1000 SERIES KJC SWIVEL JOINT



## ■ Operating Condition

Size Range : 80A~150A (3"~6")  
 Max. Pressure : 210kg/cm<sup>2</sup> (3000PSI)  
 Max. Temperature :  
 100°C (210°F) NBR Packing  
 Media : Water, Hydraulic Oil

## ■ Features / 특징

- Telescope Type Joint for extension & bend piping
- For Descaling equipment for hot rolling.
- Collision resistant by stainless parts
- Seal protection by heat resistant bellows and cover
- Better access to maintenance in limited space than other swivel joint.
- Telescope Type Swivel Joint는 신축 및 굴곡이 요구되는 곳에 사용되는 배관 joint입니다. 열연 압연설비의 Descaling 설비 등에 사용되는 joint로 Stainless 재질을 사용하여 내부식성을 높였으며, 내열 벨로우즈와 Cover를 사용하여 Seal을 보호하였습니다. 특히 이 타입은 일반 Swivel Line보다 협소한 공간에서도 사용가능하도록 교환 및 정비성이 양호합니다.

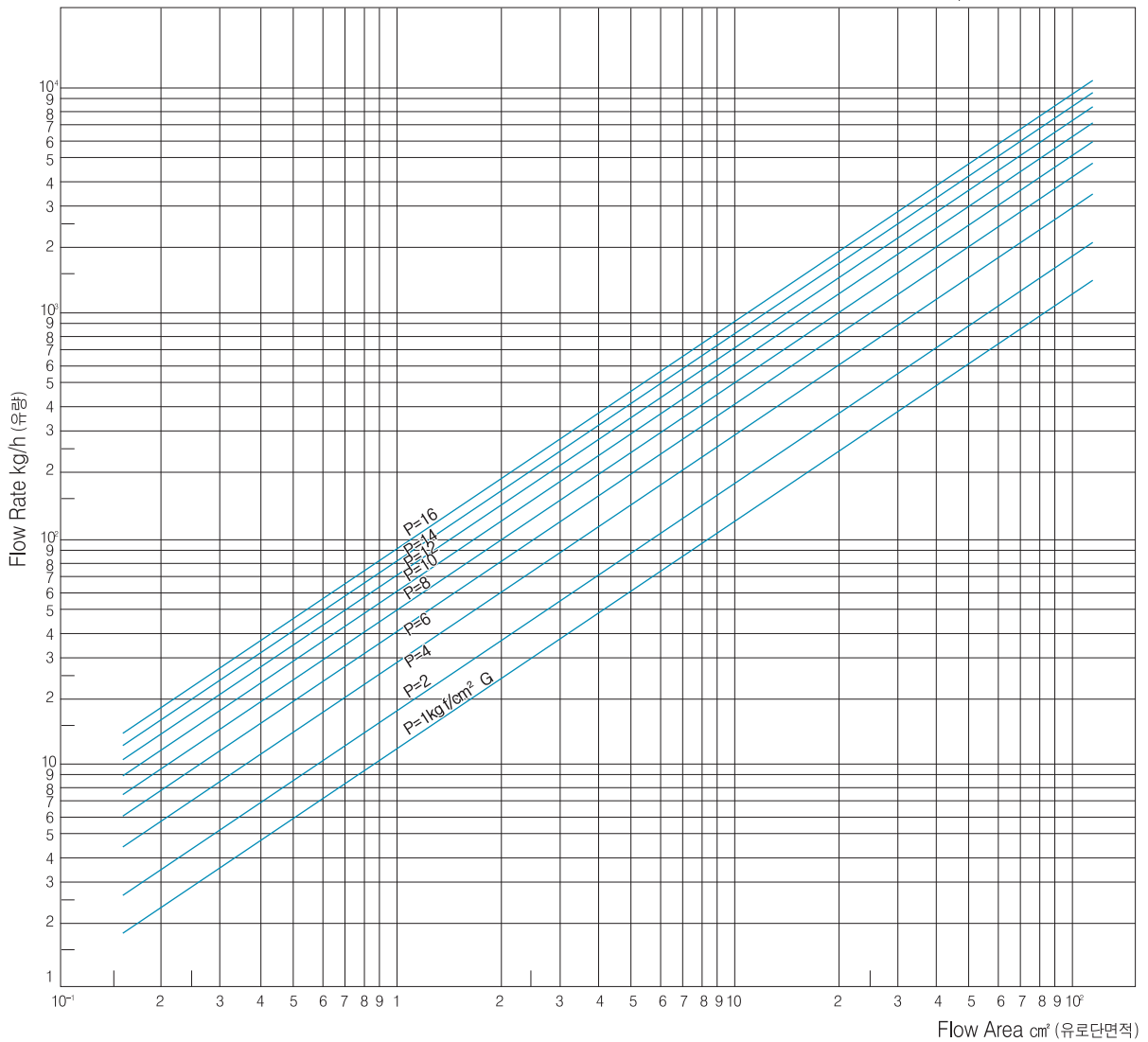
(Unit : mm)

Nominal Size	A	B	C	D	E	F	G	H
80A 3"	3006	962	1366.3	280	267	203	30	66.5
125A 5"	3211	960	1801.5	400	375	292	43	105
150A 6"	4732	960	3047	550	483	368.3	54	124

## Steam Flow Chart / 증기유량표

Flow area, Flow speed, Pressure, Flow rate (Saturated steam)

Flow Speed 30m/sec (유속)



### Flow area

● #2200, #2300

single (cm)	size	Duplex (cm)	
		Outer pipe	Inner pipe
1.13	15A-6A	0.26	0.40
2.02	20A-8A	0.51	0.69
3.14	25A-10A	1.42	1.27
7.07	32A-15A	4.53	2.03
9.62	40A-20A	5.1	3.66
18.09	50A-25A	9.01	5.81
28.26	65A-32A	13.95	9.89
38.47	80A-40A	19.93	13.32
	80A-50A	9.73	21.80

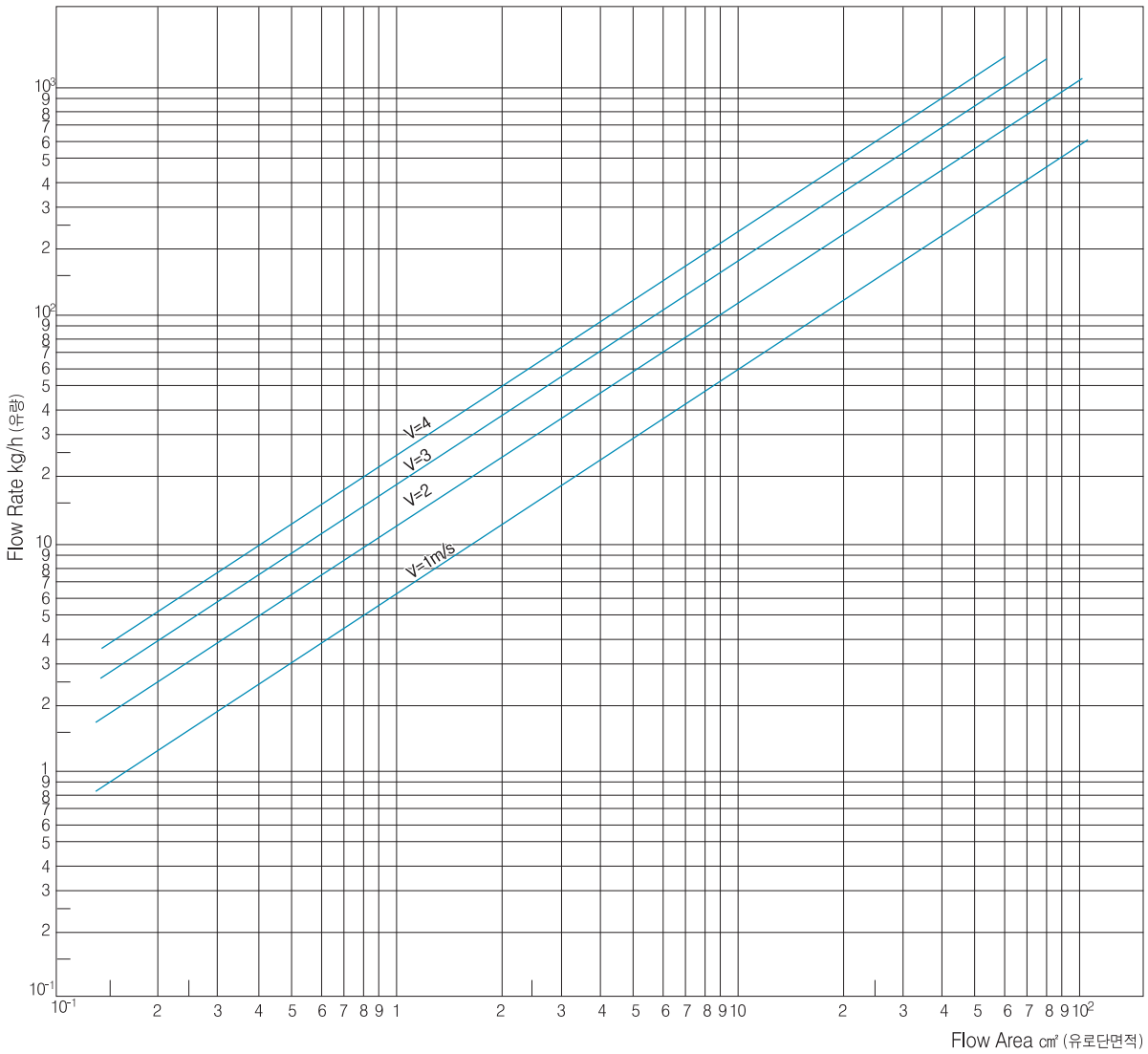
● #1000, #3000, #3200, #3700

single (cm)	size	Duplex (cm)	
		Outer pipe	Inner pipe
1.13	15A-6A	0.67	0.40
2.54	20A-8A	1.05	0.69
4.15	25A-10A	2.43	1.27
7.07	32A-15A	4.53	2.03
9.09	40A-20A	4.57	3.66
18.09	50A-25A	9.01	5.81
28.26	65A-32A	13.95	9.89
38.47	80A-40A	19.93	13.32
	80A-50A	9.73	21.80



## Flow-Rate Chart / 유량표

Flow area, Flow speed, Flow rate



### Flow area

#### ● #4000

single (cm)	size	Duplex (cm)	
		Outer pipe	Inner pipe
15.90	50A-25A	6.83	5.81
25.50	65A-25A	16.43	5.81
40.69	80A-32A	26.38	9.89
54.08	90A-40A	35.54	13.32
67.89	100A-50A	39.16	21.80
109.30	125A-65A	63.60	34.09
165.05	150A-80A	102.73	47.88

#### ● Standard Flow Speed in Pipe

관로 내의 표준 유체속도

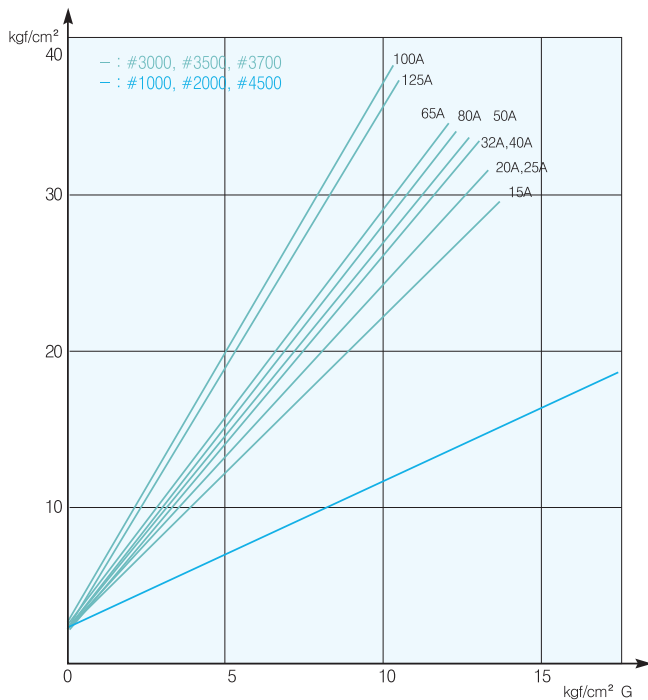
- Steam(증기) : 2~5kgf/cm<sup>2</sup> : 15~20m/s  
5~15kgf/cm<sup>2</sup> : 20~30m/s
- Water(물) : 1~10kgf/cm<sup>2</sup> : 1.5~3m/s

## Rotary Joint PV Value

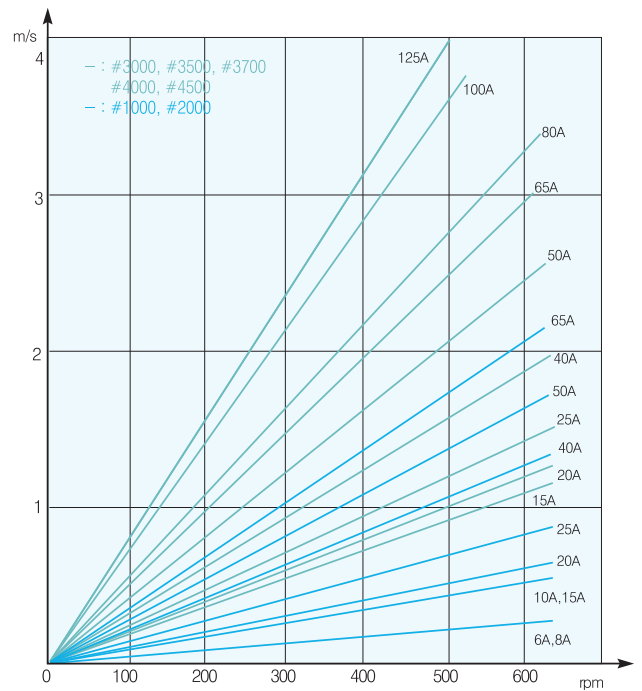
Max. PV to mating surface. (KSB1566) / 밀봉면의 재질 조합별 최고 PV값 한계

Mating surface 밀봉면의 재질조합	MAX. PV (PV값 한계)			
	Water		Other Flow	
	Unbalance	Balance	Unbalance	Balance
Stainless steel / Carbon	52.5	-	30	-
Phosphor Bronze / Carbon	23	-	36	-
Stellite / Carbon	49	85	52	580
Ceramic / Carbon	36	250	88	420
Tungsten Carbon / Tungsten Carbide	44	500	71	420
Carbon / Carbon	70	700	88	1225

- PV Value indicates relative hardness of operating conditions and it is propdional to heat value. Refer below fomula  
PV값은 운전조건에 상대적인 가혹도를 나타내는 것으로 발열량에 비례합니다. 계산식은 다음에 따릅니다.
- PV Value(kgf/cm<sup>2</sup> · m/sec) = Pressure (kgf/cm<sup>2</sup>) × Speed (m/sec)  
PV값 (kgf/cm<sup>2</sup> · m/sec) = 사용압력 (kgf/cm<sup>2</sup>) × 속도 (m/sec)
- In case of KR series, Recommend it to use less than 20kgf · m/s(PsV) for water.  
KR series의 면압(Ps)과 평균속도의 곱PsV값은 물 또는 수용액의 경우 20kgf/cm<sup>2</sup> · m/s이하로 추천합니다.



Face pressure & Media pressure (면압과 유체압력)



Peripheral speed & rpm (주속과 회전수)

Example) What is PsV value of the KR3000-65A Seal face under 150rpm and 5kgf/cm<sup>2</sup>G pressure?

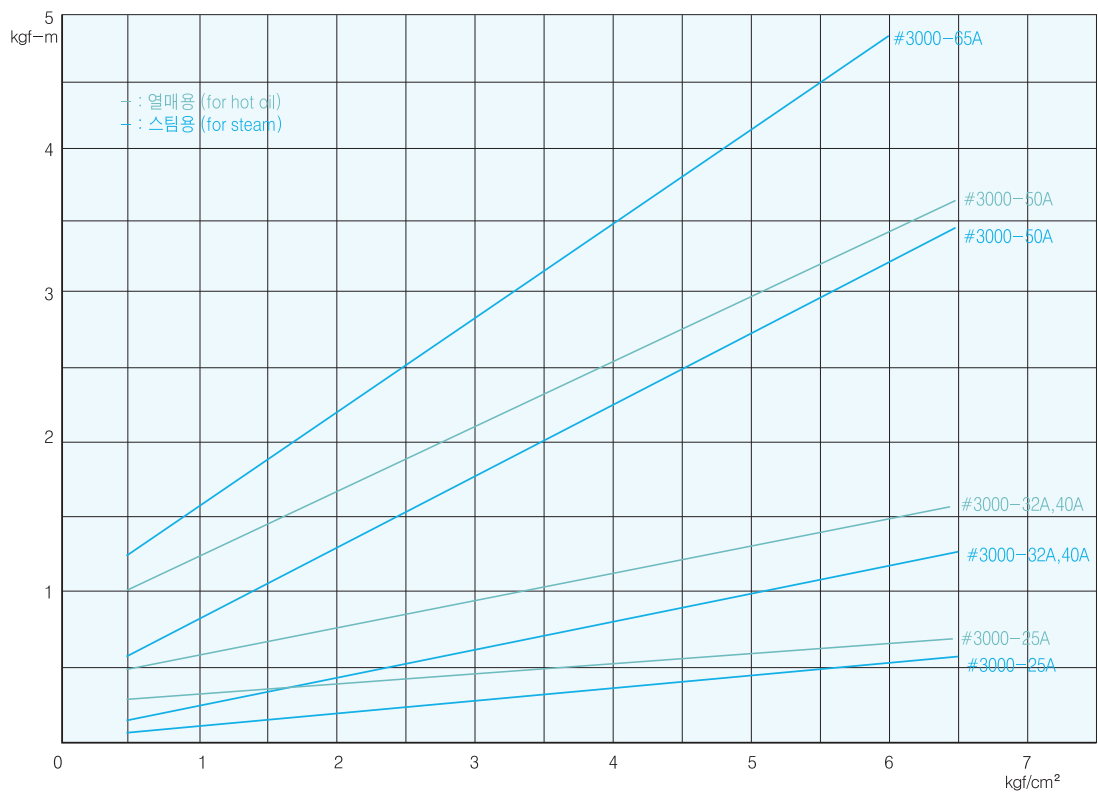
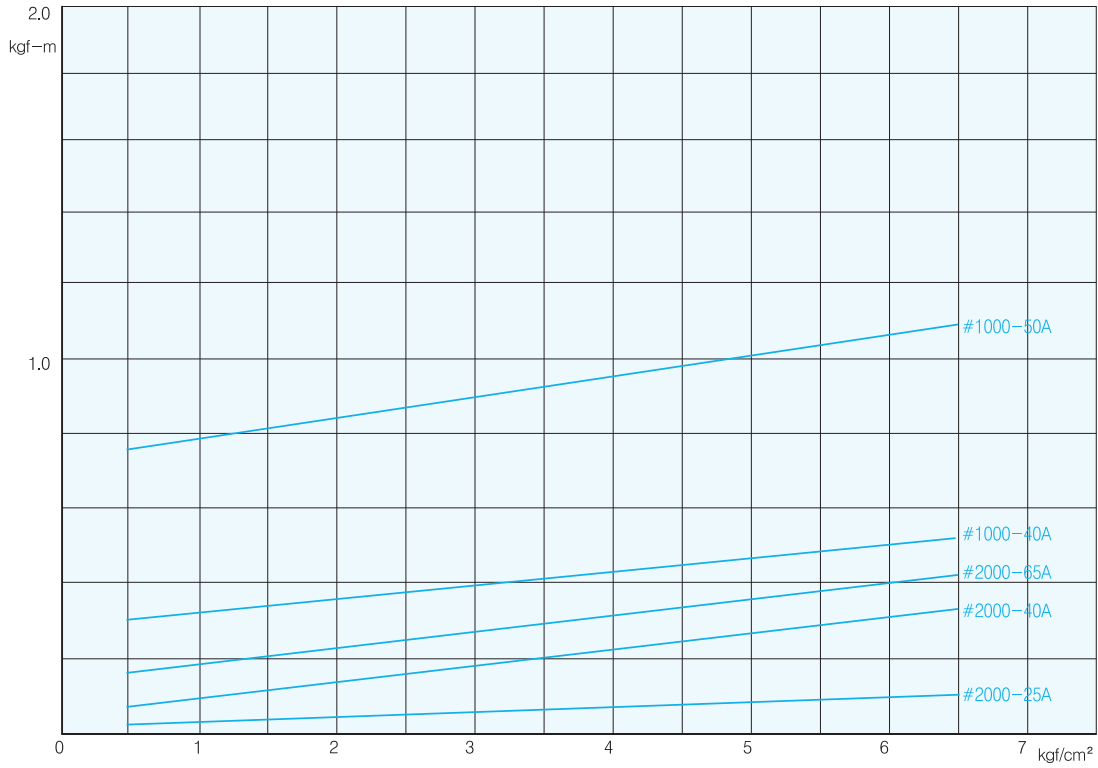
KR 3000-65A가 150rpm의 회전수와 5kgf/cm<sup>2</sup>G의 유체압력에서 사용될 때 Seal면의 PsV값은?

$$\bullet \text{PsV} = 0.7\text{m/s (150rpm)} \times 15.5\text{kgf/cm}^2 \text{ (5kgf/G)} = 10.9 \text{ kgf/cm}^2 \cdot \text{m/s}$$



# Technical Data

## Torque





# Cautions / General

## ■ Cautions on handling

1. Do not disassemble before using the rotary joint.
2. Keep away from the shock or impact.
3. Be aware that the foreign materials are not inserted into the inside of rotary joint.
4. For the lubrication type, use suitable lubricants to the fluid temperature.
5. **Do not idle before fluid is running.**

## ■ Cautions on installation.

1. Align the rotary joint center to roll's rotating center.
2. Set the rotary joint after checking directions of the roll screw and joint screw.
3. In case of Flange type, set the Journal flange at the front of roll, and set the Gasket and Stud-bolt with it, than install rotary joint.
4. **Do not use still pipes instead of flexible hose for the fluid supply.**  
**Do not set the flexible hose taut or twisted (Figure.1)**  
Hose Length: 15A~40A/300~500mm,  
50A~80A/600~800mm
5. When using hanger, make it loose fit. (Figure.2)
6. Recommended inner-pipe length is 4 times longer than rotary joint. Other cases, consult with KJC.
7. In case of newly placed machine, remove all the abrasives before setting and install the strainer if possible
8. In case of series #4000, set the support and align the support rod center to the roll. (Figure.3)

## ■ Cautions on maintenance

1. Use the genuine KJC parts for the maintenance.
2. Contact KJC A/S center, when the maintenance is required.
3. When the sealing need to be changed, check the other side counter seal face and if it is severely damaged, replace it together.
4. In case of lubricating type joint, do the lubrication accordingly based on recommended schedule.

## ■ 취급상 주의사항

1. 사용전 절대 분해 하지 마십시오.
2. 충격을 주지 마십시오.
3. 내부에 이물질이 들어가지 않도록 주의하십시오.
4. 주유식 로타리조인트 사용시 유체온도에 맞는 그리스를 사용하십시오.
5. **유체를 공급하기 전에는 공회전을 하지 마십시오.**

## ■ 설치상 주의사항

1. 롤의 중심에 로타리조인트를 설치하십시오.
2. 롤의 회전방향과 로타리조인트 나사방향은 반대로 사용하십시오.
3. 플랜지형식일 경우에는 롤 앞부분에 저널플랜지를 설치해서 가스켓 및 스톱드 볼트를 장착후 로타리조인트를 설치하십시오.
4. **강관배관은 사용할수 없으며 플렉시블호스를 사용하십시오.**  
**플렉시블호스는 너무 팽팽하거나 비틀리게 장착해서는 절대 안되며 여유있게 설치하십시오. (Figure1)**  
플렉시블호스 길이 : 15A~40A/300~500mm,  
50A~80A/600~800mm
5. 행거 사용시 헐겁게 하십시오. (Figure2)
6. 내관길이는 로타리조인트 길이의 4배를 추천합니다. 그 이상의 경우는 당사에 문의바랍니다.
7. 신설기계는 불순물을 완전 제거 후 사용하시고 가능하면 스트레이너를 설치하십시오.
8. Series #4000 설치시 Support를 설치해 주시고 Support Rod는 롤의 중심에 맞게 설치하십시오. (Figure3)

## ■ 보수점검 및 부품교환시 유의사항

1. 부품은 광진 순정품을 사용하십시오.
2. 수리요청은 광진 A/S센터로 연락바랍니다.
3. 씰링 교환시에는 상대 씰면을 확인하시고 손상이 심하면 교환하십시오.
4. 주유용 로타리조인트는 반드시 일정에 맞추어 주유하십시오.

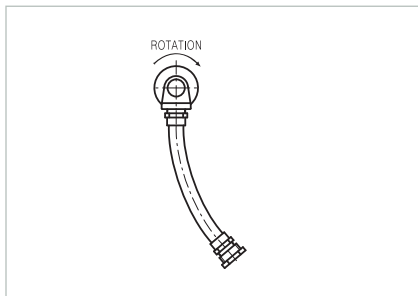


Figure.1

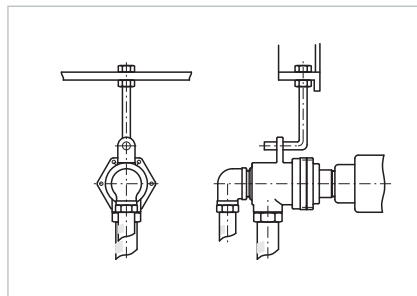


Figure.2

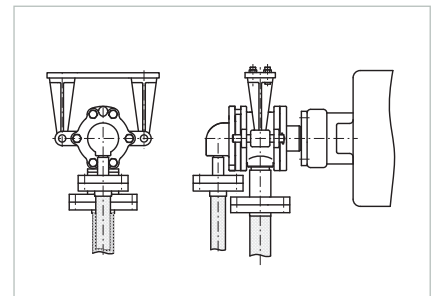


Figure.3



# Cautions / Hydraulic / series #5000

## ■ Cautions on handling

1. Never disassemble before use.
2. Keep away from the shock.
3. Be aware that the foreign materials are not inserted into the inside of rotary joint.
4. Do not idle before fluid is running.

## ■ Cautions on installation (Series #5000)

1. Install the rotary joint at the center of the roll.
2. Do not use still pipes instead of hydraulic hose for the fluid supply.  
Do not set the hydraulic hose taut or twisted.
3. In order to prevent twisting (damaging) of the hydraulic hose, install a rotation prevention device.
4. In case of newly installed machines, proceed after completely removing foreign matters.
5. On installing, connect drain port with pipe to oil tank and Never lock while using. Otherwise, rotary joint may go out of operation due to the rotary joint packing damage. (Figure.1)

## ■ Cautions on installation (Series #6000)

1. Install the rotary joint at the center of the roll.
2. Steel pipe can not be replaced for hydraulic hose. Do not install hose taut.
3. In order to prevent twisting (damaging) of the hydraulic hose, install a rotation prevention device.
4. In case of newly installed machines, proceed after completely removing foreign materials.

## ■ Cautions on Maintenance and Part Replacement

1. As for parts, use Genuine KJC parts.
2. When a repair is needed, contact KJC service team.

## ■ 취급상 주의사항

1. 사용 전 절대 분해 하지 마십시오.
2. 충격을 주지 마십시오.
3. 내부에 이물질이 들어가지 않도록 주의하십시오.
4. 유체를 공급하기 전에는 공회전을 하지 마십시오.

## ■ 설치상 주의사항 (Series #5000)

1. Roll의 중심에 Rotary Joint를 설치하십시오.
2. 강관배관은 사용할 수 없으며 유압 Hose를 사용하십시오.  
유압 Hose는 너무 팽팽하거나 비틀리게 장착해서는 절대 안되며 여유있게 설치하십시오.
3. 유압 Hose의 꼬임(파손)을 막기위하여 회전방지 장치를 반드시 설치하십시오.
4. 신설기계는 불순물을 완전 제거 후 사용하십시오.
5. 설치시 Drain Port는 오일 탱크까지 배관으로 연결하시고 사용중에는 절대 잠그지 마십시오. 잠그는 즉시 Rotary Joint의 팩킹 파손으로 Rotary Joint를 사용할 수 없습니다. (Figure.1)

## ■ 설치상 주의사항 (Series #6000)

1. Roll의 중심에 Rotary Joint를 설치하십시오.
2. 강관배관은 사용할 수 없으며 유압 Hose를 사용하십시오.  
유압 Hose는 너무 팽팽하거나 비틀리게 장착해서는 절대 안되며 여유있게 설치하십시오.
3. 유압 Hose의 꼬임(파손)을 막기위하여 회전방지 장치를 반드시 설치하십시오.
4. 신설기계는 불순물을 완전 제거 후 사용하십시오.

## ■ 보수점검 및 부품교환시 유의사항

1. 부품은 광진 순정품을 사용하십시오.
2. 수리의뢰는 광진 A/S에 의뢰 하십시오.

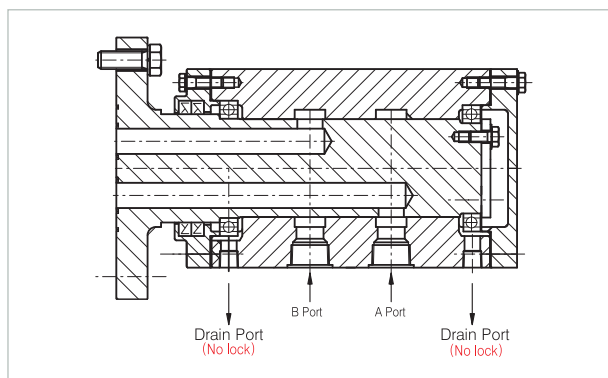


Figure.1



### KJC Hydraulic Expand Shaft



#### ■ Operating Condition

Hydraulic Pressure : 250~400 kg/cm<sup>2</sup>  
3600~5700 PSI  
Expand Dimension : 0.1~0.13mm

#### ■ Features / 특징

- For Slitter Main shaft or Separator shaft of the Slitter Machine
- Fixing Disc holder or Knife holder without Spacer or Lock Nut
- Easier Attaching and Detaching
- Increase the productivity
- KJC Hydraulic Expand Shaft는 Slitter Machine의 Slitter Main Shaft, Separator Shaft 등에 사용되는 유압식 확장 Shaft로서 Spacer나 Lock Nut 사용없이 Disc Holder나 Knife Holder를 고정시켜주는 Shaft입니다.
- KJC Hydraulic Expand Shaft는 Spacer Type Shaft 보다 Holder의 탈, 부착이 쉬워 작업성이 뛰어나며 시간이 절약되어 생산성 향상에 많은 도움을 줍니다.

### KJC Press Seat



#### ■ Operating Condition

Operation Range : 0.3~9.5mm Steel Plate  
(Slitter Knife)  
Piston Push Power : Max 24,000kgf

#### ■ Features / 특징

- Locating at Spacer type shaft of Slitter machine.
- Prevent the Slip or Release of Spacer or Knife by oil pressing
- Easy and Simple implementaion can increase productivity.
- KJC Press Seat는 Slitter Machine의 Spacer Type Shaft 에 설치하여 Spacer 또는 Knife를 유압에 의해 밀착시킴으로 슬립현상이나 풀림현상을 방지할 수 있는 장치입니다.
- KJC Press Seat의 설치는 아주 간단하여 종전 방법인 Lock Nut에 비해 작업성이 뛰어나며 시간이 절약되어 생산성 향상에 많은 도움을 줍니다.



# Order Sheet

• Order No. ....

• Date. ....

Company			
Address			
Tel		Fax	
<b>Model No. &amp; Spec.</b>			
Model No.			
Shaft Size			
Quantity			
Delivery			
Comments			
<b>Operating Conditions</b>			
Fluid Name			
Temperature	°C		
Pressure	kg/cm <sup>2</sup>		
REV	rpm		
Machine Name			
Comments			



**Head office · factory**

730-13, Hakjang-dong, Sasang-gu, Busan, Korea

TEL. 82-51-316-1232 FAX. 82-51-317-1232

**Seoul office**

776-6, Daerim3-dong, Yeongdeungpo-gu, Seoul, Korea

TEL. 82-2-846-5232 FAX. 82-2-846-2674

[www.kwangjin.com](http://www.kwangjin.com)